

Product datasheet for **AP01199PU-S**

EMR3 (ADGRE3) Rabbit Polyclonal Antibody

Product data:

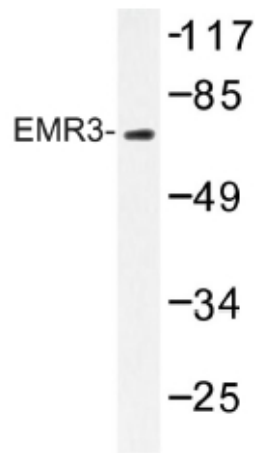
Product Type:	Primary Antibodies
Applications:	IF, WB
Recommended Dilution:	Western Blot: 1/500-1/1000. Immunofluorescence: 1/50-1/200.
Reactivity:	Human
Host:	Rabbit
Clonality:	Polyclonal
Immunogen:	Synthetic peptide, corresponding to amino acids 620-671 of Human EMR3.
Specificity:	This antibody detects endogenous levels of EMR3 protein. (region surrounding Tyr652)
Formulation:	Phosphate buffered saline (PBS), pH~7.2 State: Aff - Purified State: Liquid purified Ig fraction (> 95% pure by SDS-PAGE). Preservative: 15 mM Sodium Azide
Concentration:	1.0 mg/ml
Purification:	Affinity Chromatography using epitope-specific immunogen.
Conjugation:	Unconjugated
Storage:	Store undiluted at 2-8°C for one month or (in aliquots) at -20°C for longer. Avoid repeated freezing and thawing.
Stability:	Shelf life: One year from despatch.
Predicted Protein Size:	~ 70 kDa
Gene Name:	adhesion G protein-coupled receptor E3
Database Link:	Entrez Gene 84658 Human Q9BY15



[View online »](#)

Background:

EMR3 is a member of the class B seven-span transmembrane (TM7) receptor family expressed predominantly by cells of the immune system. Family members are characterized by an extended extracellular region with a variable number of N-terminal epidermal growth factor (EGF)-like domains coupled to a TM7 domain via a mucin-like spacer domain. This gene is closely linked to the gene encoding egf-like molecule containing mucin-like hormone receptor 2 on chromosome 19. This protein may play a role in myeloid-myeloid interactions during immune and inflammatory responses. Alternative splicing of this gene results in two transcript variants encoding two distinct isoforms. EMR3 has been reported to be expressed in neutrophils, monocytes, and macrophages. ESTs have been isolated from liver/spleen and mixed libraries.

Product images:

Western blot (WB) analysis of EMR3 antibody in extracts from Jurkat cells.