

Product datasheet for **AP01197PU-M**

EDG1 (S1PR1) Rabbit Polyclonal Antibody

Product data:

Product Type:	Primary Antibodies
Applications:	IF, IHC, WB
Recommended Dilution:	Western Blot: 1/500-1/1000. Immunofluorescence: 1/50-1/200. Immunohistochemistry on paraffin sections: 1/50-1/200.
Reactivity:	Human
Host:	Rabbit
Clonality:	Polyclonal
Immunogen:	Synthetic peptide, corresponding to the N-terminus of Human EDG-1.
Specificity:	This antibody detects endogenous levels of EDG-1 protein. (region surrounding Thr48)
Formulation:	Phosphate buffered saline (PBS), pH~7.2 State: Aff - Purified State: Liquid purified Ig fraction (> 95% pure by SDS-PAGE). Preservative: 0.05% Sodium Azide
Concentration:	1.0 mg/ml
Purification:	Affinity Chromatography using epitope-specific immunogen.
Conjugation:	Unconjugated
Storage:	Store undiluted at 2-8°C for one month or (in aliquots) at -20°C for longer. Avoid repeated freezing and thawing.
Stability:	Shelf life: One year from despatch.
Predicted Protein Size:	~43 kDa
Gene Name:	sphingosine-1-phosphate receptor 1
Database Link:	Entrez Gene 1901 Human P21453



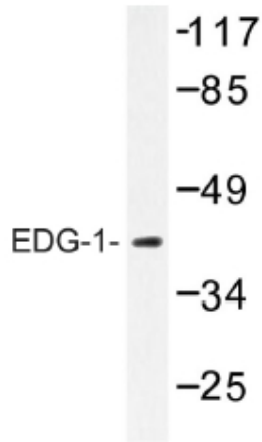
[View online »](#)

Background:

EDG1, a Lysophospholipid/Lysosphingolipid Receptor, binds sphingosine-1-phosphate and may control cell proliferation, survival, and suppression of apoptosis. Overexpression of EDG1 leads to increased cell-cell aggregation and overexpression of cadherins. EDG1 transcripts have been reported to be present in embryonic and adult brain, lung alveolar macrophages, vascular smooth muscle cells, endothelial cells, fibroblasts and melanocytes but to be absent from breast cancer cell lines.

Synonyms:

S1P receptor 1, S1PR1, CHEDG1, EDG1, ECGF1, D1S3362, FLJ58121

Product images:

Western blot (WB) analysis of EDG-1 antibody in extracts from COLO205 cells.