

Product datasheet for **AP01194PU-M**

LINC02210-CRHR1 Rabbit Polyclonal Antibody

Product data:

Product Type:	Primary Antibodies
Applications:	ELISA, IF, WB
Recommended Dilution:	Western blot: 1/500-1/1000. Immunofluorescence: 1/50-1/200. Immunohistochemistry on Paraffin Sections: 1/50-1/200.
Reactivity:	Human, Mouse, Rat
Host:	Rabbit
Clonality:	Polyclonal
Immunogen:	Synthetic peptide, corresponding to amino acids 150-200 of Human CRF-RI.
Specificity:	This antibody detects endogenous levels of CRF-RI protein. (region surrounding His177)
Formulation:	Phosphate buffered saline (PBS), pH~7.2 State: Aff - Purified State: Liquid purified Ig fraction (> 95% pure by SDS-PAGE). Preservative: 0.05% Sodium Azide
Concentration:	1.0 mg/ml
Purification:	Affinity Chromatography using epitope-specific immunogen.
Conjugation:	Unconjugated
Storage:	Store undiluted at 2-8°C for one month or (in aliquots) at -20°C for longer. Avoid repeated freezing and thawing.
Stability:	Shelf life: One year from despatch.
Predicted Protein Size:	~50 kDa
Gene Name:	LINC02210-CRHR1 readthrough
Database Link:	<u>Entrez Gene 104909134 Human P34998</u>



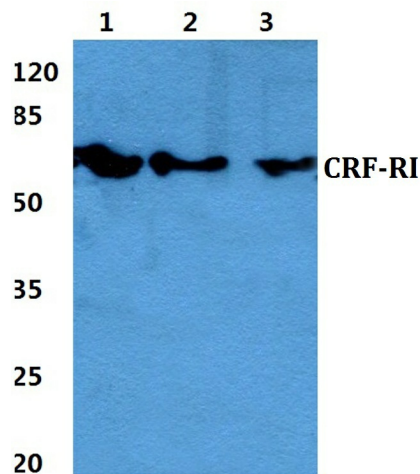
[View online »](#)

Background:

A high affinity CRF binding protein, designated CRF-BP, has been discovered in postmortem brain samples from AD patients. CRF-BP serves to bind and inactivate CRF, reducing the pool of “free CRF” available to bind CRFRs. Two CRF receptors, designated CRF-RI and CRF-RII, exhibit distinct brain localizations. Two forms of CRF-RII, designated CRF-RII α and CRF-RII β , result from alternative mRNA splicing. Urocortin, an additional member of the CRF family, shares 63% sequence identity with urotensin and 45% sequence identity with CRF. Urocortin specifically binds to and activates CRF-RI and CRF-RII, but binds to CRF-RII more efficiently than CRF, suggesting that it may be the true, high affinity ligand for the CRF receptor type II.

Synonyms:

CRHR-1, CRFR, CRFR1, CRHR, Corticotropin-releasing factor receptor 1, CRF-R, CRF1, Corticotropin-releasing hormone receptor 1, CRH-R 1

Product images:


Western blot (WB) analysis of CRF-RI antibody at 1/500 dilution ;Lane 1:A549 whole cell lysate ;Lane 2:Raw264.7 whole cell lysate ;Lane 3:PC12 whole cell lysate