

Product datasheet for **AP01193PU-N**

Chemokine Receptor D6 (ACKR2) Rabbit Polyclonal Antibody

Product data:

Product Type:	Primary Antibodies
Applications:	IF, IHC, WB
Recommended Dilution:	Western Blot: 1/500 - 1/1000. Immunohistochemistry on paraffin sections: 1/50 - 1/200. Immunofluorescence: 1/50 - 1/200.
Reactivity:	Human
Host:	Rabbit
Clonality:	Polyclonal
Immunogen:	Synthetic peptide, corresponding to amino acids 361-510 of Human Chemokine Receptor D6.
Specificity:	This antibody detects endogenous levels of Chemokine Receptor D6 protein. (region surrounding Ser383)
Formulation:	Phosphate buffered saline (PBS), pH~7.2 State: Aff - Purified State: Liquid purified Ig fraction (> 95% pure by SDS-PAGE). Preservative: 0.05% Sodium Azide
Concentration:	1.0 mg/ml
Purification:	Affinity Chromatography using epitope-specific immunogen.
Conjugation:	Unconjugated
Storage:	Store undiluted at 2-8°C for one month or (in aliquots) at -20°C for longer. Avoid repeated freezing and thawing.
Stability:	Shelf life: One year from despatch.
Predicted Protein Size:	~ 44 kDa
Gene Name:	atypical chemokine receptor 2
Database Link:	Entrez Gene 1238 Human O00590



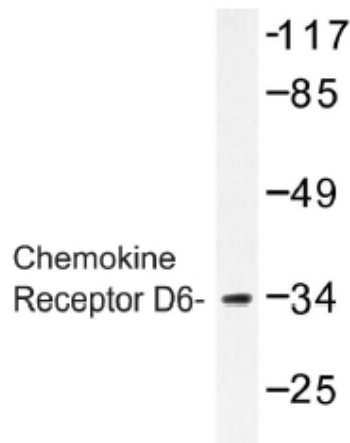
[View online »](#)

Background:

This gene encodes a beta chemokine receptor similar to G protein-coupled receptors. Chemokines and their receptor-mediated signal transduction are critical for the recruitment of effector immune cells to the inflammation site. This receptor appears to bind the majority of beta-chemokine family members; however, its specific function remains unknown.

Synonyms:

Chemokine-binding protein D6, C-C chemokine receptor D6, Chemokine-binding protein 2, CMKBR9

Product images:

Western blot (WB) analysis of Chemokine Receptor D6 antibody in extracts from HepG2.