

Product datasheet for **AP01192PU-M**

beta 2 Adrenergic Receptor (ADRB2) Rabbit Polyclonal Antibody

Product data:

Product Type:	Primary Antibodies
Applications:	IF, IHC, WB
Recommended Dilution:	Western Blot: 1/500 - 1/1000. Immunohistochemistry on paraffin sections: 1/50 - 1/200. Immunofluorescence: 1/50 - 1/200.
Reactivity:	Human
Host:	Rabbit
Clonality:	Polyclonal
Immunogen:	Synthetic peptide, corresponding to amino acids 351-400 of Human AR-β2.
Specificity:	This antibody detects endogenous levels of AR-beta2 protein. (region surrounding Cys378)
Formulation:	Phosphate buffered saline (PBS), pH~7.2 State: Aff - Purified State: Liquid purified Ig fraction (> 95% pure by SDS-PAGE). Preservative: 0.05% Sodium Azide
Concentration:	1.0 mg/ml
Purification:	Affinity Chromatography using epitope-specific immunogen.
Conjugation:	Unconjugated
Storage:	Store undiluted at 2-8°C for one month or (in aliquots) at -20°C for longer. Avoid repeated freezing and thawing.
Stability:	Shelf life: One year from despatch.
Predicted Protein Size:	~ 47 kDa, 68 kDa (glycosylated), 95 kDa (Dimer)
Gene Name:	adrenoceptor beta 2
Database Link:	<u>Entrez Gene 154 Human P07550</u>



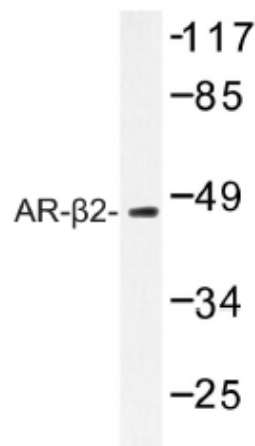
[View online »](#)

Background:

Adrenergic receptors (ARs) (the term "adrenergic" reflects the alternative name for epinephrine, adrenaline) include four general types (alpha1, alpha2, beta1 and beta2) which are found in different target tissues and differ in their affinities and responses to various agonists and antagonists. cDNA clones have been isolated for all of the major AR subtypes and a number of closely related receptors have been identified by this approach. Each of the receptors have been shown to consist of single polypeptide chains which transverse the plasma membrane seven times, presumably forming a bundle of helices within the membrane. These transmembrane regions are hydrophobic and are interconnected by extracellular and intracellular hydrophilic loops. The coupling of ARs to specific intracellular effectors is mediated through diverse heterotrimeric G proteins and is regulated by G protein-coupled receptor kinases (GRKs), cAMP-dependent protein kinase A and protein kinase C directed phosphorylation.

Synonyms:

ADRB2, ADRB2R, B2AR, Beta-2 adrenoreceptor

Product images:


Western blot (WB) analysis of AR-beta 2 antibody in extracts from HepG2 cells.