

Product datasheet for **AP01191PU-N**

APJ Receptor (APLNR) Rabbit Polyclonal Antibody

Product data:

Product Type:	Primary Antibodies
Applications:	IF, IHC, WB
Recommended Dilution:	Western Blot: 1/500 - 1/1000. Immunohistochemistry on paraffin sections: 1/50 - 1/200. Immunofluorescence: 1/50 - 1/200.
Reactivity:	Human, Mouse, Rat
Host:	Rabbit
Isotype:	IgG
Clonality:	Polyclonal
Immunogen:	Synthetic peptide, corresponding to amino acids 150-200 of Human APLNR.
Specificity:	This antibody detects endogenous levels of APJR-1 protein. (region surrounding Cys181)
Formulation:	Phosphate buffered saline (PBS), pH7.2 State: Aff - Purified State: Liquid purified Ig fraction (> 95% pure by SDS-PAGE) Preservative: 15 mM Sodium Azide
Concentration:	1.0 mg/ml
Purification:	Affinity Chromatography using epitope-specific immunogen.
Conjugation:	Unconjugated
Storage:	Store undiluted at 2-8°C for one month or (in aliquots) at -20°C for longer. Avoid repeated freezing and thawing.
Stability:	Shelf life: One year from despatch.
Predicted Protein Size:	~ 43 kDa
Gene Name:	apelin receptor
Database Link:	Entrez Gene 187 Human P35414



[View online »](#)

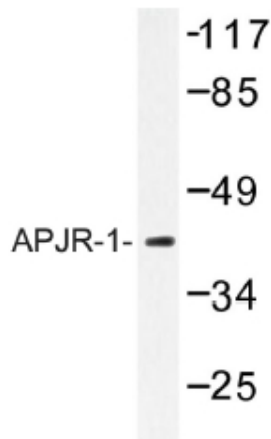
Background:

There are at least two distinct receptor subtypes of angiotensin II: angiotensin II receptor, type 1 (AGTR1) and angiotensin II receptor, type 2 (AGTR2). Most of the effects of angiotensin II are mediated by the AGTR1 receptor. This gene is related to the AGTR1 gene by sequence similarity. It was cloned based on a conserved transmembrane domain found in members of the G protein-coupled receptor (GPCR) gene family.

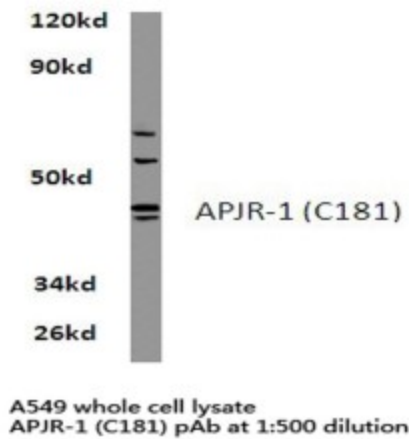
Synonyms:

APLNR, AGTRL1, APJ, HG11

Product images:



Western blot (WB) analysis of APJR-1 antibody in extracts from 293.



Western blot (WB) analysis of APJR-1 antibody in extracts from A549 cells.