

## Product datasheet for **AP01185PU-S**

### Cadherin 8 (CDH8) Rabbit Polyclonal Antibody

#### Product data:

Product Type:	Primary Antibodies
Applications:	IF, IHC, WB
Recommended Dilution:	<b>Western Blot:</b> 1/500-1/1000. <b>Immunofluorescence:</b> 1/50-1/200. <b>Immunohistochemistry on Paraffin Sections:</b> 1/50-1/200.
Reactivity:	Human, Mouse, Rat
Host:	Rabbit
Clonality:	Polyclonal
Immunogen:	Synthetic peptide, corresponding to amino acids 500-550 of Human Cadherin-8.
Specificity:	This antibody detects endogenous levels of Cadherin-8 protein. (region surrounding Ala519)
Formulation:	Phosphate buffered saline (PBS), pH~7.2 State: Aff - Purified State: Liquid purified Ig fraction (> 95% pure by SDS-PAGE) Preservative: 15 mM Sodium Azide
Concentration:	1.0 mg/ml
Purification:	Affinity Chromatography using epitope-specific immunogen
Conjugation:	Unconjugated
Storage:	Store undiluted at 2-8°C for one month or (in aliquots) at -20°C for longer. Avoid repeated freezing and thawing.
Stability:	Shelf life: One year from despatch.
Predicted Protein Size:	~88 kDa
Gene Name:	cadherin 8
Database Link:	<a href="#">Entrez Gene 1006 Human P55286</a>



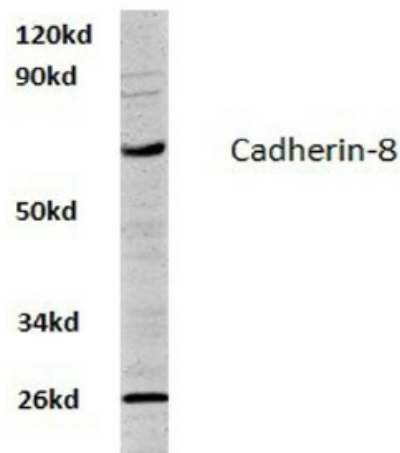
[View online »](#)

**Background:**

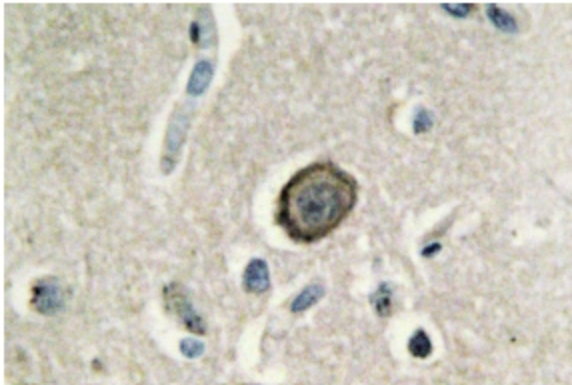
The cadherins are a family of  $\text{Ca}^{++}$ -dependent adhesion molecules that function to mediate cell-cell binding critical to the maintenance of tissue structure and morphogenesis. Cadherins each contain a large extracellular domain at the amino terminus, which is characterized by a series of five homologous repeats, the most distal of which is thought to be responsible for binding specificity. The relatively short carboxy terminal, intracellular domain interacts with a variety of cytoplasmic proteins, including beta-catenin, to regulate cadherin function. cadherin-8 expression has been seen in mouse thymus tissue as well as in specific subdivisions of the developing central nervous system. It plays a potential role in brain morphology.

**Synonyms:**

CDH8

**Product images:**

Western blot analysis of Cadherin-8 antibody in extracts from HeLa cells at 1/500 dilution.



Immunohistochemistry analysis of Cadherin-8 antibody in paraffin-embedded human brain tissue.