

## Product datasheet for **AP01184PU-M**

### **P cadherin (CDH3) Rabbit Polyclonal Antibody**

#### **Product data:**

Product Type:	Primary Antibodies
Applications:	IHC, WB
Recommended Dilution:	<b>Western Blot:</b> 1/500 - 1/1000. <b>Immunohistochemistry on paraffin sections</b> 1/50 - 1/200.
Reactivity:	Human
Host:	Rabbit
Clonality:	Polyclonal
Immunogen:	Synthetic peptide, corresponding to amino acids 45-90 of Human P-Cadherin.
Specificity:	This antibody detects endogenous levels of P-Cadherin protein. (region surrounding Gly78)
Formulation:	Phosphate buffered saline (PBS), pH~7.2 State: Aff - Purified State: Liquid purified Ig fraction (> 95% pure by SDS-PAGE). Preservative: 0.05% Sodium Azide
Concentration:	1.0 mg/ml
Purification:	Affinity Chromatography using epitope-specific immunogen.
Conjugation:	Unconjugated
Storage:	Store undiluted at 2-8°C for one month or (in aliquots) at -20°C for longer. Avoid repeated freezing and thawing.
Stability:	Shelf life: One year from despatch
Predicted Protein Size:	~ 86 kDa
Gene Name:	cadherin 3
Database Link:	<a href="#">Entrez Gene 1001 Human P22223</a>



[View online »](#)

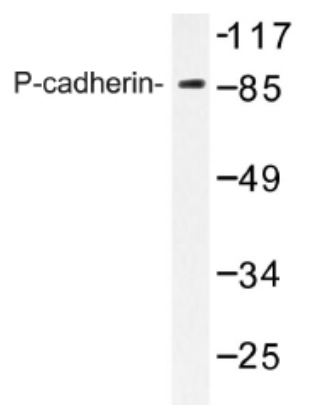
**Background:**

The cadherins are a family of  $\text{Ca}^{++}$ -dependent adhesion molecules that function to mediate cell-cell binding critical to the maintenance of tissue structure and morphogenesis. Cadherins each contain a large extracellular domain at the amino terminus, which is characterized by a series of five homologous repeats, the most distal of which is thought to be responsible for binding specificity. The relatively short carboxy terminal, intracellular domain interacts with a variety of cytoplasmic proteins, including beta-catenin, to regulate cadherin function. R-cadherin (for retinal-cadherin, also designated cadherin-4), which was first identified in the retina of chicken, has been shown to be involved in the development of striated muscle and potentially epithelia in addition to its involvement in retinal development.

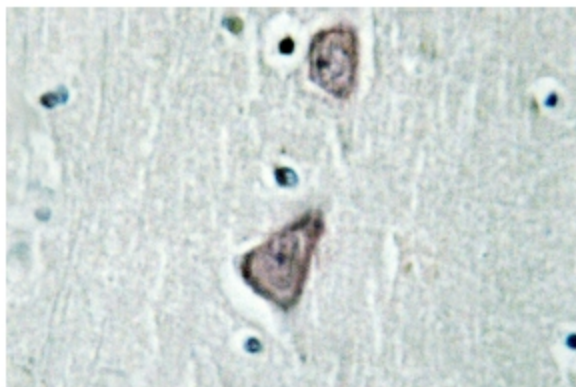
**Synonyms:**

CDH3, CDHP, Placental cadherin, P-Cadherin, Cadherin P

**Product images:**



Western blot (WB) analysis of P-Cadherin antibody in extracts from K562 cells.



Immunohistochemistry (IHC) analyzes of P-Cadherin antibody in paraffin-embedded human brain tissue.