

Product datasheet for **AP01178PU-M**

GAS 6 (GAS6) Rabbit Polyclonal Antibody

Product data:

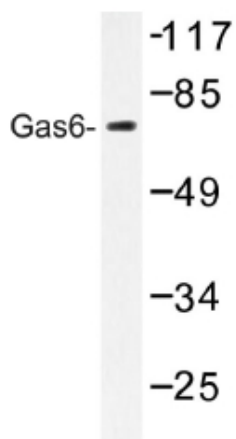
Product Type:	Primary Antibodies
Applications:	IHC, WB
Recommended Dilution:	Western Blot: 1/500 - 1/1000. Immunohistochemistry on paraffin sections 1/50 - 1/200.
Reactivity:	Human
Host:	Rabbit
Clonality:	Polyclonal
Immunogen:	Synthetic peptide, corresponding to amino acids 278-328 of Human Gas6.
Specificity:	This antibody detects endogenous levels of Gas6 protein. (region surrounding Gly309)
Formulation:	Phosphate buffered saline (PBS), pH~7.2 State: Aff - Purified State: Liquid purified Ig fraction (> 95% pure by SDS-PAGE). Preservative: 0.05% Sodium Azide
Concentration:	1.0 mg/ml
Purification:	Affinity Chromatography using epitope-specific immunogen.
Conjugation:	Unconjugated
Storage:	Store undiluted at 2-8°C for one month or (in aliquots) at -20°C for longer. Avoid repeated freezing and thawing.
Stability:	Shelf life: One year from despatch.
Predicted Protein Size:	~ 80 kDa
Gene Name:	growth arrest specific 6
Database Link:	Entrez Gene 2621 Human Q14393
Background:	Growth arrest specific proteins, including Gas1 and Gas6, are activated in quiescent cells. Gas1-induced growth arrest is mediated by p53, and Gas1 appears to be able to suppress tumor cell growth. Gas6, a ligand for the tyrosine kinase receptor Axl, was initially identified as a member of the vitamin K-dependent protein family and exhibits a high degree of amino acid sequence homology to protein S, a negative co-regulator in the coagulation pathway.



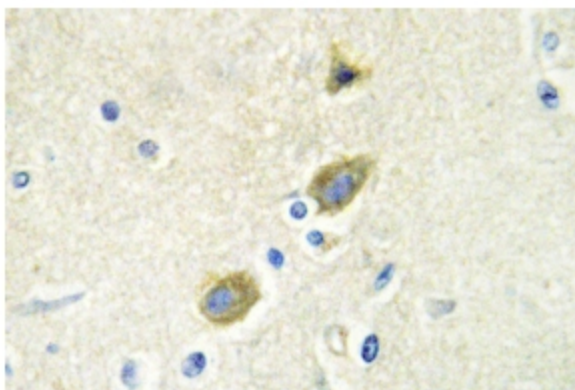
[View online »](#)

Synonyms: Growth arrest-specific protein 6, GAS-6

Product images:



Western blot (WB) analysis of Gas6 antibody in extracts from 293 cells.



Immunohistochemistry (IHC) analyzes of Gas6 antibody in paraffin-embedded human brain tissue.