

## Product datasheet for **AP01177PU-N**

### AKAP13 Rabbit Polyclonal Antibody

#### Product data:

Product Type:	Primary Antibodies
Applications:	IHC, WB
Recommended Dilution:	<b>Western Blot:</b> 1/500 - 1/1000. <b>Immunohistochemistry on paraffin sections</b> 1/50 - 1/200.
Reactivity:	Human
Host:	Rabbit
Clonality:	Polyclonal
Immunogen:	Synthetic peptide, corresponding to amino acids 700-750 of Human AKAP 13.
Specificity:	This antibody detects endogenous levels of AKAP13 Protein. (region surrounding Asp738)
Formulation:	Phosphate buffered saline (PBS), pH~7.2 State: Aff - Purified State: Liquid purified Ig fraction (> 95% pure by SDS-PAGE). Preservative: 0.05% Sodium Azide
Concentration:	1.0 mg/ml
Purification:	Affinity Chromatography using epitope-specific immunogen.
Conjugation:	Unconjugated
Storage:	Store undiluted at 2-8°C for one month or (in aliquots) at -20°C for longer. Avoid repeated freezing and thawing.
Stability:	Shelf life: One year from despatch.
Predicted Protein Size:	~ 307 kDa
Gene Name:	A-kinase anchoring protein 13
Database Link:	<a href="#">Entrez Gene 11214 Human Q12802</a>



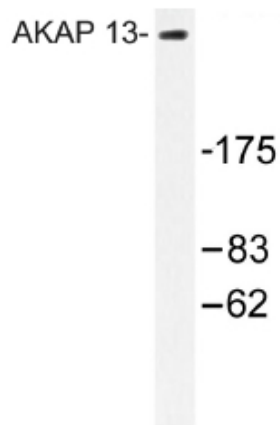
[View online »](#)

**Background:**

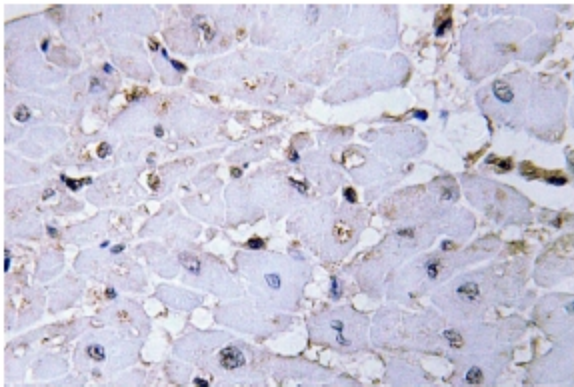
AKAP13 functions as a protein kinase A (PKA)-anchoring protein and acts as an adapter protein to selectively couple G alpha-13 and Rho. It contains a dbl oncogene homology (DH) domain and a pleckstrin homology (PH) domain. The DH domain is associated with guanine nucleotide exchange activation for the Rho/Rac family of small GTP binding proteins. AKAP13 augments gene activation by the estrogen receptor and activates estrogen receptor beta by a p38 MAPK-dependent pathway. AKAP13 is involved in the signaling pathways leading to cardiomyocytes hypertrophy.

**Synonyms:**

BRX, HT31, LBC, AKAP-Lbc, P47

**Product images:**

Western blot (WB) analysis of AKAP13 antibody in extracts from Jurkat cells.



Immunohistochemistry (IHC) analyzes of AKAP13 antibody in paraffin-embedded human lung carcinoma tissue.