

Product datasheet for **AP01176PU-N**

MN1 Rabbit Polyclonal Antibody

Product data:

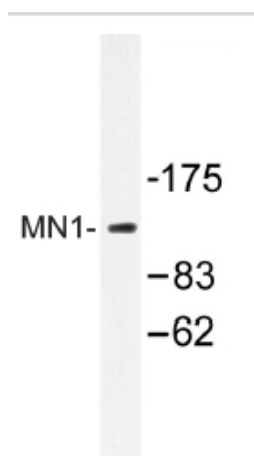
Product Type:	Primary Antibodies
Applications:	WB
Recommended Dilution:	Western Blot: 1/500 - 1/1000.
Reactivity:	Human
Host:	Rabbit
Clonality:	Polyclonal
Immunogen:	Synthetic peptide, corresponding to amino acids 830-880 of Human MN1.
Specificity:	This antibody detects endogenous levels of MN1 protein. (region surrounding Lys850)
Formulation:	Phosphate buffered saline (PBS), pH~7.2 State: Aff - Purified State: Liquid purified Ig fraction (> 95% pure by SDS-PAGE). Preservative: 0.05% Sodium Azide
Concentration:	1.0 mg/ml
Purification:	Affinity Chromatography using epitope-specific immunogen.
Conjugation:	Unconjugated
Storage:	Store undiluted at 2-8°C for one month or (in aliquots) at -20°C for longer. Avoid repeated freezing and thawing.
Stability:	Shelf life: One year from despatch
Predicted Protein Size:	~ 135 kDa
Gene Name:	meningioma (disrupted in balanced translocation) 1
Database Link:	Entrez Gene 4330 Human Q10571
Background:	The MN1 gene, which resides on chromosome 22, encodes a 1,319 amino acid protein. The ETV6/TEL gene has been reported to fuse to MN1. The MN1-TEL fusion protein, encoded by the translocation (12;22)(p13;q11) in myeloid leukemia, is a transcription factor with transforming activity. Defects in MN1 (meningioma 1) may be a cause of meningiomas, slowly growing benign tumors derived from the arachnoidal cap cells of the leptomeninges, the soft coverings of the brain and spinal cord.



[View online »](#)

Synonyms: meningioma 1

Product images:



Western blot (WB) analysis of MN1 antibody in extracts from COLO.