

## Product datasheet for **AP01174PU-M**

### CEBP gamma (CEBPG) Rabbit Polyclonal Antibody

#### Product data:

Product Type:	Primary Antibodies
Applications:	IF, IHC, WB
Recommended Dilution:	<b>Western Blot:</b> 1/500 - 1/1000. <b>Immunohistochemistry on paraffin sections</b> 1/50 - 1/200. <b>Immunofluorescence:</b> 1/50-1/200.
Reactivity:	Human, Mouse, Rat
Host:	Rabbit
Clonality:	Polyclonal
Immunogen:	Synthetic peptide, corresponding to amino acids 50-100 of Human C/EBP-γ.
Specificity:	This antibody detects endogenous levels of C/EBP-gamma Protein. (region surrounding Glu64)
Formulation:	Phosphate buffered saline (PBS), pH~7.2 State: Aff - Purified State: Liquid purified Ig fraction (> 95% pure by SDS-PAGE). Preservative: 0.05% Sodium Azide
Concentration:	1.0 mg/ml
Purification:	Affinity Chromatography using epitope-specific immunogen.
Conjugation:	Unconjugated
Storage:	Store undiluted at 2-8°C for one month or (in aliquots) at -20°C for longer. Avoid repeated freezing and thawing.
Stability:	Shelf life: One year from despatch.
Predicted Protein Size:	~ 22 kDa
Gene Name:	CCAAT/enhancer binding protein gamma
Database Link:	<a href="#">Entrez Gene 1054 Human P53567</a>



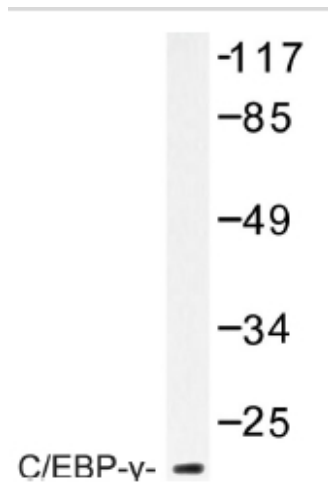
[View online »](#)

**Background:**

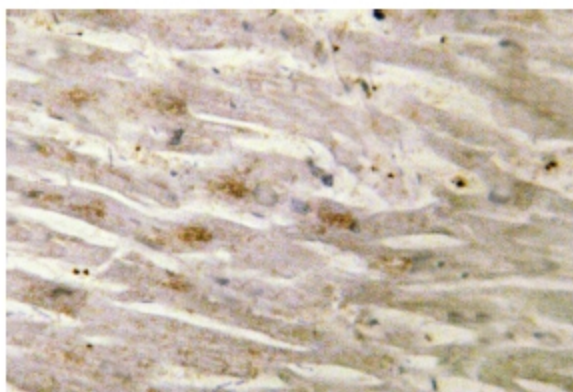
The transcription factor C/EBP alpha (CCAAT-enhancer binding protein) is a heatstable, sequence-specific DNA-binding protein first purified from rat liver nuclei that binds avidly to several different cis-regulatory DNA sequences commonly associated with viral and cellular genes transcribed by RNA polymerase II. C/EBP alpha regulates gene expression in a variety of tissues including liver, adipose, lung and intestine. C/EBP alpha uses a bipartite structural motif to bind DNA. Two protein chains dimerize through a set of amphipathic alpha helices termed the leucine zipper. Highly basic polypeptide regions emerge from the zipper to form a linked set of DNA contact surfaces. C/EBP alpha appears to function exclusively in terminally differentiated, growth-arrested cells. Additional family members include C/EBP beta, C/EBP gamma, C/EBP theta and C/EBP-epsilon, all of which exhibit similar DNA-binding specificities and affinities to C/EBP alpha. Furthermore, C/EBP-beta and C/EBP theta readily form heterodimers both with each other as well as with C/EBP alpha.

**Synonyms:**

C/EBP gamma

**Product images:**


Western blot (WB) analysis of C/EBP-gamma antibody in extracts from RAW264.7 cells.



Immunohistochemistry (IHC) analysis of C/EBP-gamma antibody in paraffin-embedded human heart tissue.