

## Product datasheet for **AP01171PU-N**

### Prothrombin (F2) Rabbit Polyclonal Antibody

#### Product data:

Product Type:	Primary Antibodies
Applications:	IF, IHC, WB
Recommended Dilution:	<b>Western Blot:</b> 1/500 - 1/1000. <b>Immunofluorescence</b> 1/50 - 1/200. <b>Immunohistochemistry on Paraffin Sections:</b> 1/50 - 1/200.
Reactivity:	Human, Mouse, Rat
Host:	Rabbit
Clonality:	Polyclonal
Immunogen:	Synthetic peptide, corresponding to amino acids 701-750 of Human Prothrombin.
Specificity:	This antibody detects endogenous levels of Prothrombin protein. (region surrounding Gly724)
Formulation:	Phosphate buffered saline (PBS), pH~7.2 State: Aff - Purified State: Liquid purified Ig fraction (> 95% pure by SDS-PAGE). Preservative: 0.05% Sodium Azide
Concentration:	1.0 mg/ml
Purification:	Affinity Chromatography using epitope-specific immunogen.
Conjugation:	Unconjugated
Storage:	Store the antibody undiluted at 2-8°C for one month or (in aliquots) at -20°C for longer. Avoid repeated freezing and thawing.
Stability:	Shelf life: One year from despatch.
Predicted Protein Size:	~ 70 kDa
Gene Name:	coagulation factor II, thrombin
Database Link:	<a href="#">Entrez Gene 2147 Human P00734</a>



[View online »](#)

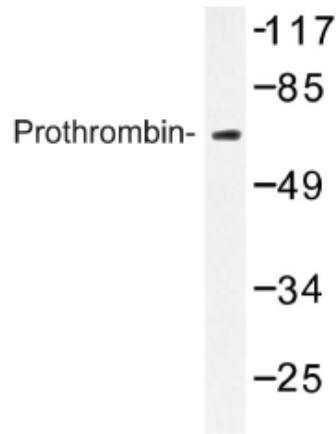
**Background:**

Hemostasis following tissue injury involves the deployment of essential plasma procoagulants (Prothrombin and Factors X, IX, V and VIII), which mediate a blood coagulation cascade that leads to the formation of insoluble Fibrin clots and the promotion of platelet aggregation. Proteolytic cleavage of Prothrombin (Factor II) at residue 44 leads to formation of Thrombin in the first step of the coagulation cascade. Thrombin cleaves bonds between Arg and Gly and activates Factors V, VII, VIII and XIII in complex with thrombomodulin and Protein C. Thrombin maintains vascular integrity during development and postnatal life and coordinates connective tissue proteins by stimulating fibroblast procollagen production.

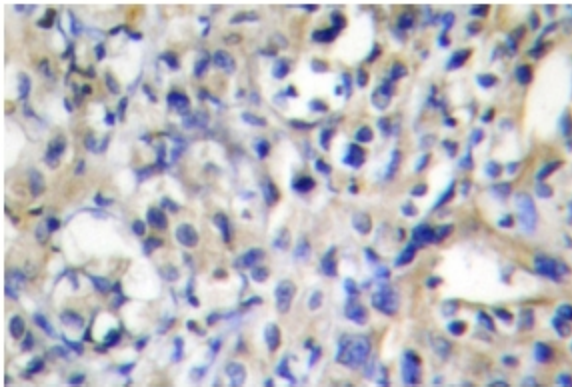
**Synonyms:**

Coagulation factor II

**Product images:**



Western blot (WB) analysis of Prothrombin antibody in extracts from NIH-3T3 cells.



Immunohistochemistry (IHC) analyzes of Prothrombin antibody in paraffin-embedded human liver carcinoma tissue.