

Product datasheet for **AP01157PU-N**

IL6 Rabbit Polyclonal Antibody

Product data:

Product Type: Primary Antibodies

Applications: ELISA, FN, IF, IHC, WB

Recommended Dilution: **Immunofluorescence:** This antibody stained HeLa, PC3 and BJ ras cell lines. The primary antibody was incubated at 2.0 µg/ml overnight at 4°C followed by a fluorescent labeled secondary antibody (See **Figure 2-4**).

Information and photo are courtesy of the Cell Profiling group, SciLifeLab Stockholm.

Immunohistochemistry on Paraffin Sections: 0.25-0.5 µg/ml with overnight incubation at 4°C.

Staining of Formalin-Fixed, Paraffin Embedded Sections of Human cervical squamous cell carcinoma using an HRP labeled polymer detection system with a DAB Chromogen.

Heat induced antigen retrieval with a pH 6.0 Sodium Citrate buffer is recommended.

Tissue samples were provided by the Cooperative Human Tissue Network which is funded by the National Cancer Institute.

Neutralization: To yield one-half maximal inhibition (ND50) of the biological activity of Human IL-6 (100 ng/ml), a concentration of 0.2-0.4 µg/ml of this antibody is required.

Sandwich ELISA: To detect Human IL-6 by Sandwich ELISA (using 100 µl/well antibody solution) a concentration of 0.5-2.0 µg/ml of this antibody is required. This antigen affinity purified antibody, in conjunction with Biotinylated Anti-Human IL-6 (Cat.-No AP01157BT-N or AP01157BT-S) as a detection antibody, allows the detection of at least 0.2-0.4 ng/well of recombinant Human IL-6.

Western Blot: To detect Human IL-6 use a concentration of 0.1-0.2 µg/ml. Used in conjunction with compatible secondary reagents the detection limit for recombinant Human IL-6 is 1.5-3.0 ng/lane, under either reducing or non-reducing conditions.

Reactivity: Human

Host: Rabbit

Clonality: Polyclonal

Immunogen: Highly pure (>98%) *E.coli* derived recombinant Human Interleukin 6 (Cat.-No PA079).

Specificity: This antibody detects Human Interleukin-6. Other species not tested.

Formulation: PBS, pH 7.2 without preservatives

State: Aff - Purified

State: Lyophilized (sterile filtered) purified Ig fraction



[View online »](#)

Reconstitution Method:	Centrifuge vial prior to opening. Restore in sterile water to a concentration of 0.1-1.0 mg/ml.
Purification:	Affinity Chromatography employing immobilized Human IL-6 matrix
Conjugation:	Unconjugated
Storage:	Prior to reconstitution store at 2-8°C. Following reconstitution store undiluted at 2-8°C for one month or (in aliquots) at -20°C for longer. Avoid repeated freezing and thawing.
Stability:	Shelf life: one year from despatch.
Gene Name:	interleukin 6
Database Link:	Entrez Gene 3569 Human P05231
Background:	<p>Interleukin 6 (IL6) is a multifunctional 24 kDa protein originally discovered in the medium of RNA stimulated fibroblastoid cells. It is upregulated by IL1, TNF, PDGF, IFN beta, TNF alpha, NGF, IL17 and downregulated by glucocorticoids IL4, TGF beta. IL6 appears to be directly involved in the responses that occur after infection and cellular injury, and it may prove to be as important as IL1 and TNF alpha in regulating the acute phase response. IL6 has also been implicated in regulating adipose mass.</p> <p>IL6 is reported to be produced by fibroblasts, activated T cells, activated monocytes or macrophages and endothelial cells. It acts upon a variety of cells including fibroblasts, myeloid progenitor cells, T cells, B cells and hepatocytes. In addition, IL6 appears to interact with IL2 in the proliferation of T lymphocytes. IL6 potentiates the proliferative effect of IL3 on multipotential hematopoietic progenitors.</p>
Synonyms:	IL-6, Interferon beta-2, IFNB2, B-cell stimulatory factor 2, BSF-2, CDF

Product images:

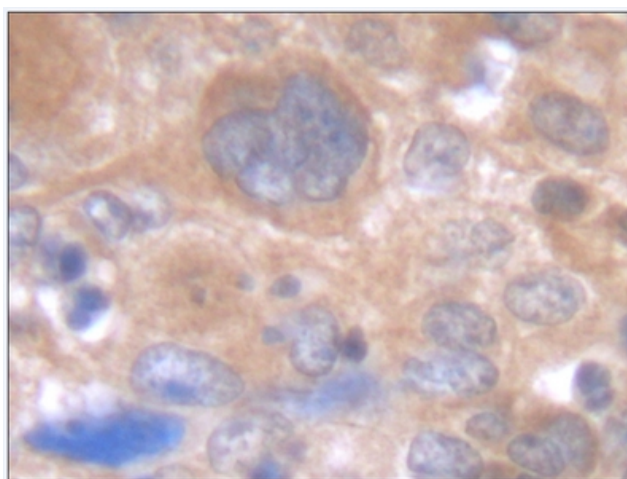


Figure 1. Formalin-Fixed, Paraffin-Embedded Sections of Human cervical squamous cell carcinoma stained with IL6 antibody Cat.-No AP01157PU at 0.25-0.5 ug/ml

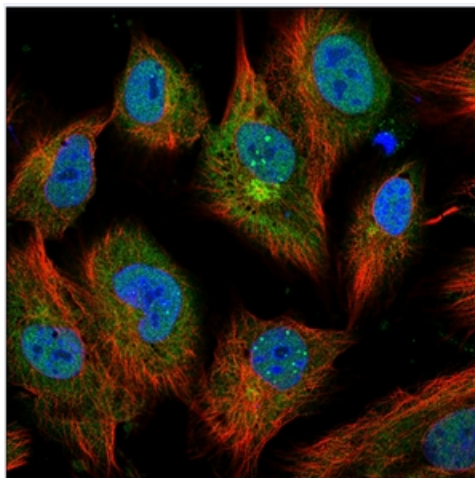


Figure 2. Immunofluorescence staining of BJ ras cell lines using IL6 antibody Cat.-No AP01157PU

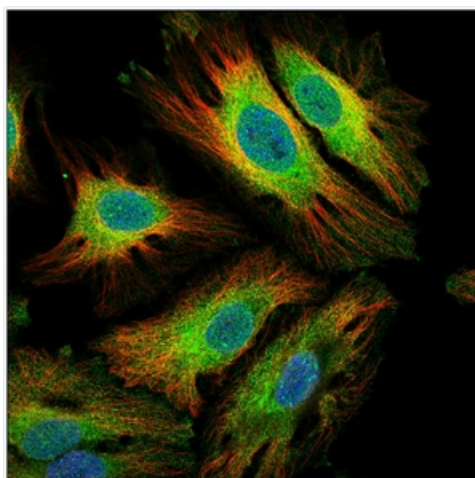


Figure 3. Immunofluorescence staining of HeLa cell line using IL6 antibody Cat.-No AP01157PU

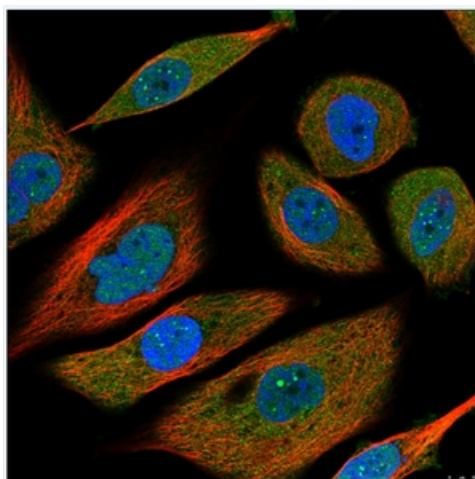


Figure 4. Immunofluorescence staining of PC3 cell line using IL6 antibody Cat.-No AP01157PU