

Product datasheet for **AP01151BT-N**

beta Defensin 1 (DEFB1) Rabbit Polyclonal Antibody

Product data:

Product Type:	Primary Antibodies
Applications:	ELISA, WB
Recommended Dilution:	Direct ELISA: To detect Human BD-1 (using 100 µl/well antibody solution) a concentration of ~1.0 µg/ml of this antibody is required. In conjunction with compatible secondary reagents, it allows the detection of at least 0.2-0.4 ng/well of recombinant Human BD-1. Sandwich ELISA: To detect Human BD-1 (using 100 µl/well antibody solution) a concentration of 0.25-1.0 µg/ml of this antibody is required. In conjunction with Polyclonal Anti-Human BD-1 (Cat.-No AP01151PU-N or AP01151PU-S) as a capture antibody, it allows the detection of at least 0.2-0.4 ng/well of recombinant Human BD-1. Western blot: To detect Human BD-1 this antibody can be used at a concentration of 0.1-0.2 µg/ml. Used in conjunction with compatible secondary reagents the detection limit for recombinant Human BD-1 is 1.5-3.0 ng/lane, under either reducing or non-reducing conditions.
Reactivity:	Human
Host:	Rabbit
Clonality:	Polyclonal
Immunogen:	<i>E. Coli</i> derived recombinant Human beta Defensin-1
Specificity:	This antibody detects Human BD-1. Other species not tested.
Formulation:	PBS, pH 7.2 without preservatives. Label: Biotin State: Lyophilized (sterile filtered) purified Ig fraction
Reconstitution Method:	Centrifuge vial prior to opening. Restore in sterile PBS containing 0.1% BSA to a concentration of 0.1-1.0 mg/ml.
Purification:	Affinity Chromatography
Conjugation:	Biotin
Storage:	Prior to reconstitution store at 2-8°C. Following reconstitution store undiluted at 2-8°C for one month or (in aliquots) at -20°C for longer. Avoid repeated freezing and thawing.



[View online »](#)

Stability: Shelf life: one year from despatch.

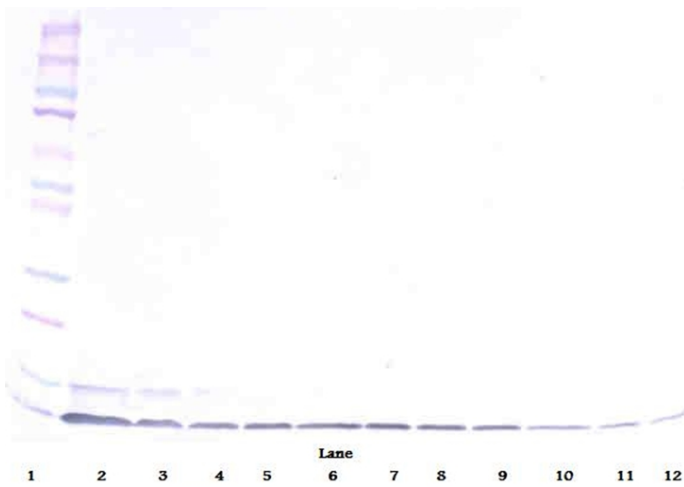
Gene Name: defensin beta 1

Database Link: [Entrez Gene 1672 Human P60022](#)

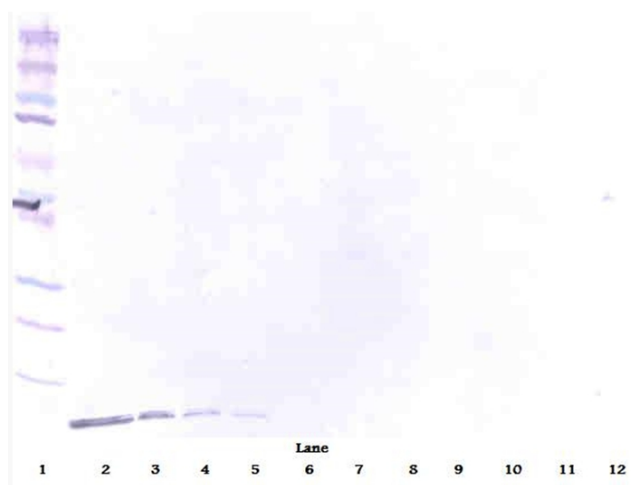
Background: Defensins form a family of microbicidal and cytotoxic peptides made by neutrophils. Members of the defensin family are highly similar in protein sequence. This gene encodes defensin, beta 1, an antimicrobial peptide implicated in the resistance of epithelial surfaces to microbial colonization. This gene maps in close proximity to defensin family member, defensin, alpha 1 and has been implicated in the pathogenesis of cystic fibrosis. The mature form of Beta defensin 1 is 36 amino acids.

Synonyms: Beta-defensin 1, BD1, BD-1, HBD1, hBD-1, DEFB1, DEFB101

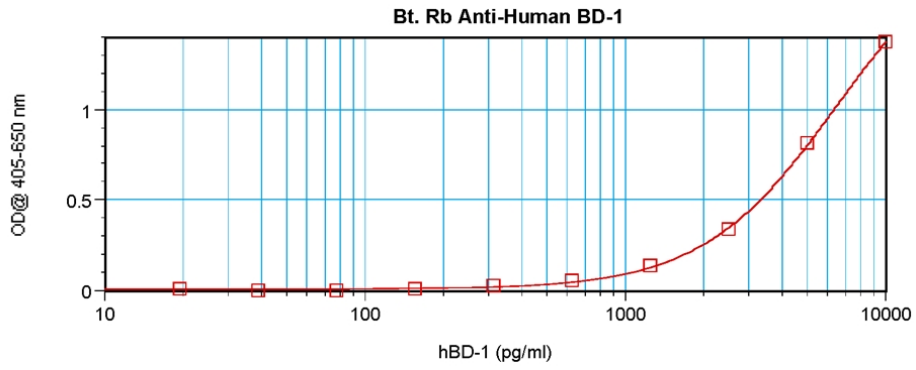
Product images:



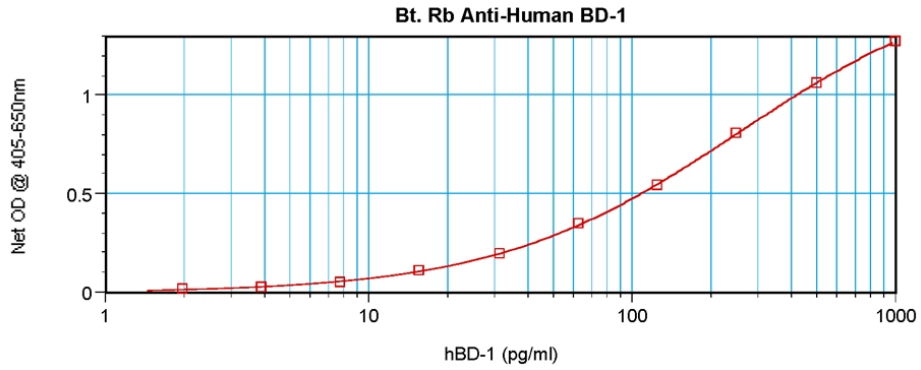
Western Blot (Unreduced) using BD1 Antibody Cat.-No AP01151B



Western Blot (Reduced) using BD1 Antibody Cat.-No AP01151B



Direct ELISA using BD1 Antibody Cat.-No AP01151B



Sandwich ELISA using BD1 Antibody Cat.-No AP01151B