

Product datasheet for **AP01150PU-S**

CCN2 Rabbit Polyclonal Antibody

Product data:

Product Type:	Primary Antibodies
Applications:	ELISA, FN, IHC, WB
Recommended Dilution:	Neutralization: To yield one-half maximal inhibition [ND50] of the biological activity of Human CTGF (5.0 µg/ml) a concentration of 6.0-9.0 µg/ml of this antibody is required. Sandwich ELISA: To detect Human CTGF (using 100 µl/well antibody solution) a concentration of 0.5-2.0 µg/ml of this antibody is required. This affinity purified antibody, in conjunction with Biotinylated antibody Human CTGF (<i>Cat.-No</i> AP01150BT) as a detection antibody, allows the detection of at least 0.2-0.4 ng/well of recombinant Human CTGF. Western blot: To detect Human CTGF this antibody can be used at a concentration of 0.1-0.2 µg/ml. Used in conjunction with compatible secondary reagents the detection limit for recombinant hCTGF is 1.5-3.0 ng/lane, under either reducing or non-reducing conditions. Immunohistochemistry on Formalin-Fixed, Paraffin-Embedded Sections: 0.125-0.250 µg/ml with an overnight incubation at 4°C. An HRP-labeled polymer detection system was used with a DAB chromogen. Heat induced antigen retrieval with a pH 6.0 Sodium Citrate buffer is recommended.
Reactivity:	Human
Host:	Rabbit
Clonality:	Polyclonal
Immunogen:	Highly pure (>98%) <i>E.coli</i> derived recombinant Human CTGF (<i>Cat.-No</i> PA527)
Specificity:	This antibody detects Human Connective Tissue Growth Factor (CTGF). Other species not tested.
Formulation:	PBS, pH 7.2 without preservatives. State: Aff - Purified State: Lyophilized (sterile filtered) purified Ig fraction.
Reconstitution Method:	Restore in sterile water to a concentration of 0.1-1.0 mg/ml.
Purification:	Immunoaffinity Chromatography employing immobilized Human CTGF matrix.
Conjugation:	Unconjugated



[View online »](#)

Storage: Prior to reconstitution store at 2-8°C.
Following reconstitution store undiluted at 2-8°C for one month
or (in aliquots) at -20°C for longer.
Avoid repeated freezing and thawing.

Stability: Shelf life: one year from despatch.

Gene Name: connective tissue growth factor

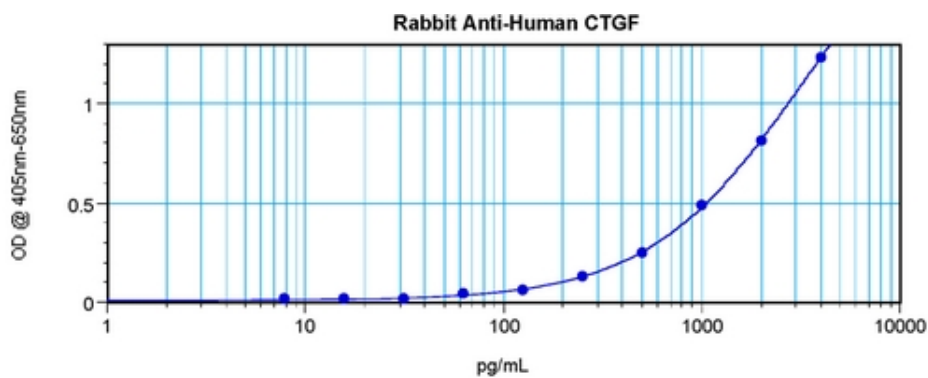
Database Link: [Entrez Gene 1490 Human P29279](#)

Background: CTGF (connective tissue growth factor) is a 38kDa, cysteine-rich, secreted peptide. It is a new member of the peptide family that include serum-induced immediate early gene products, a v-src-induced peptide and a putative proto-oncogene. Among the many functions of the CTGF gene family are embryogenesis, wound healing and regulation of extracellular matrix production.

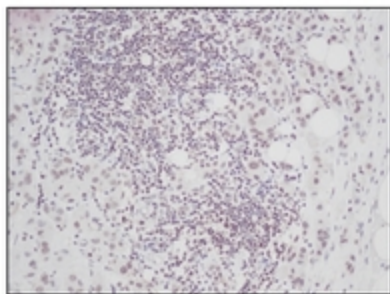
Synonyms: CCN2, HCS24, IGFBP8, Connective tissue growth factor, IGF-binding protein 8, IBP8

Note: Centrifuge vial prior to opening.

Product images:



Sandwich ELISA using [AP01150PU-N] CTGF Antibody (Cat.-No AP01150PU)



Formalin-Fixed, Paraffin-Embedded Sections of Human breast invasive malignant carcinoma stained with CTGF Antibody (Cat.-No AP01150PU).
Tissue samples were provided by the Cooperative Human Tissue Network, which is funded by the National Cancer Institute.