

## Product datasheet for **AP01139PU-S**

### IGFBP5 Rabbit Polyclonal Antibody

#### Product data:

Product Type:	Primary Antibodies
Applications:	ELISA, IF, WB
Recommended Dilution:	<p><b>Indirect ELISA:</b> To detect hIGF-BP5 (using 100 µl/well antibody solution) a concentration of 0.5-2.0 µg/ml of this antibody is required. In conjunction with compatible secondary reagents, it allows the detection of at least 0.2-0.4 ng/well of recombinant hIGF-BP5.</p> <p><b>Sandwich ELISA:</b> To detect hIGF-BP5 (using 100 µl/well antibody solution) a concentration of 0.5-2.0 µg/ml of this antibody is required. In conjunction with Biotinylated Anti-Human IGF-BP5 (Cat.-No AP01139BT-N or AP01139BT-S) as a detection antibody, it allows the detection of at least 0.2-0.4 ng/well of recombinant hIGF-BP5.</p> <p><b>Western blot:</b> To detect hIGF-BP5 this antibody can be used at a concentration of 0.1-0.2 µg/ml. Used in conjunction with compatible secondary reagents the detection limit for recombinant hIGF-BP5 is 1.5-3.0 ng/lane, under either reducing or non-reducing conditions.</p> <p><b>Immunofluorescence:</b> This antibody stained U-2 OS and U-251 MG cells. The primary antibody was incubated at 2.0 mg/ml overnight at 4°C followed by a fluorescent labeled secondary antibody. Optimal concentrations and conditions may vary. <i>Information and photo are courtesy of the Cell Profiling group, SciLifeLab Stockholm.</i></p>
Reactivity:	Human
Host:	Rabbit
Clonality:	Polyclonal
Immunogen:	Highly pure (> 98%) <i>E.coli</i> derived recombinant Human IGF-BP5 (Cat.-No PA522)
Specificity:	This antibody detects Insulin-like Growth Factor Binding Protein 5.
Formulation:	<p>PBS, pH 7.2</p> <p>State: Aff - Purified</p> <p>State: Lyophilized (sterile filtered) purified Ig fraction</p>
Reconstitution Method:	<p>Centrifuge vial prior to opening.</p> <p>Restore in sterile water to a concentration of 0.1-1.0 mg/ml.</p>
Purification:	Immunoaffinity Chromatography
Conjugation:	Unconjugated



[View online »](#)

**Storage:** Store lyophilized at 2-8°C for 6 months or at -20°C long term.  
After reconstitution store the antibody undiluted at 2-8°C for one month or (in aliquots) at -20°C long term.  
Avoid repeated freezing and thawing.

**Stability:** Shelf life: one year from despatch.

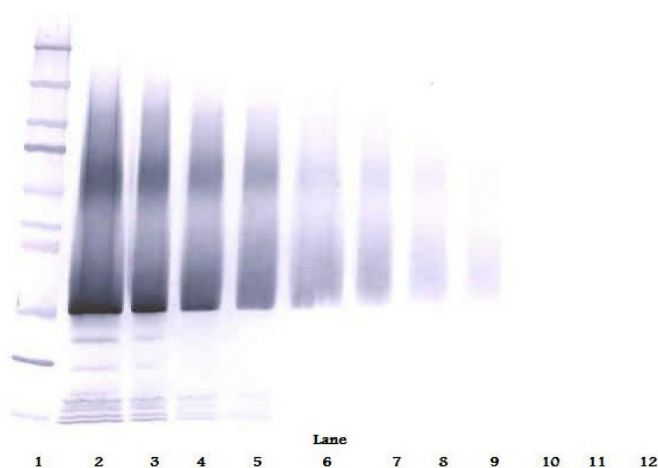
**Gene Name:** insulin like growth factor binding protein 5

**Database Link:** [Entrez Gene 3488 Human P24593](#)

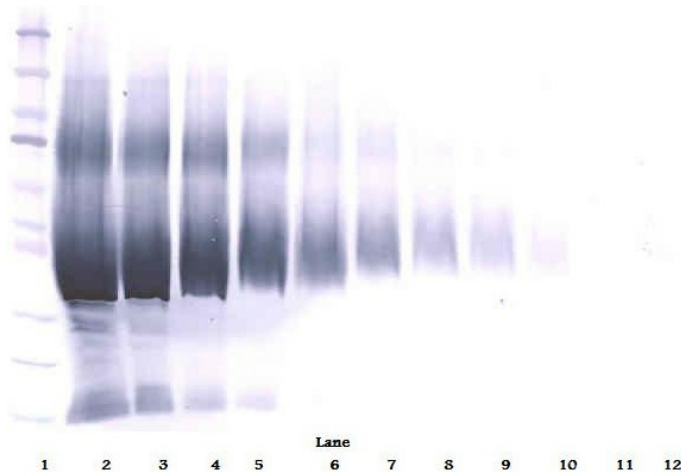
**Background:** IGFBP5 is one of a family of proteins that bind to insulin-like growth factors (IGFs). IGFBP5 is a multifunctional protein which acts not only as a traditional binding protein but also functions as a growth factor independent of IGFs to stimulate bone formation. Currently there are seven named IGF-BPs that form high affinity complexes with both IGFI and IGFI. IGFBP5 is the major IGF-binding protein present in bone tissue and helps potentiate the action of IGFI on smooth muscle cells, fibroblasts or osteoblasts. Data shows that IGFBP5 acts as a growth inhibitor and pro-apoptotic agent in breast cancer cells. IGFBP5 overexpressing mice show an increase in neonatal mortality, reduced female fertility, whole-body growth inhibition and retarded muscle development.

**Synonyms:** IGF-binding protein 5, IGFBP-5, IBP5, IBP-5

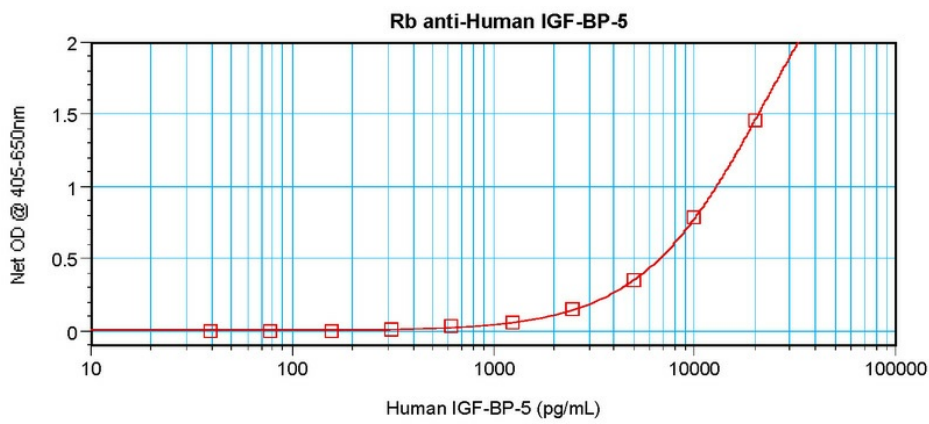
### Product images:



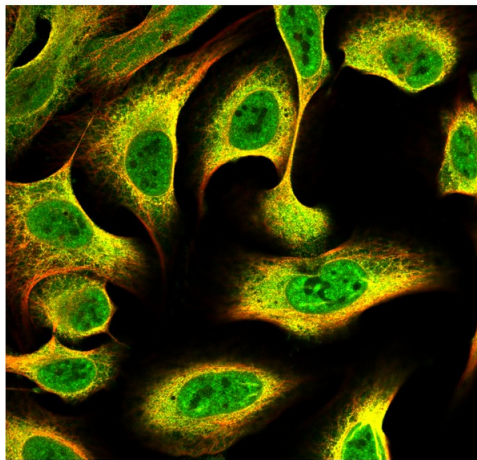
Western Blot (Unreduced) using IGFBP5 Antibody  
Cat.-No AP01139PU



Western Blot (Reduced) using IGFBP5 Antibody Cat.-No AP01139PU



Sandwich ELISA using IGFBP5 Antibody Cat.-No AP01139PU



This antibody stained U-2 OS and U-251 MG cells. The primary antibody was incubated at 2.0 mg/ml overnight at 4°C followed by a fluorescent labeled secondary antibody. Optimal concentrations and conditions may vary. Information and photo are courtesy of the Cell Profiling group, SciLifeLab Stockholm.