

Product datasheet for **AP01134BT-N**

Retnlb Rabbit Polyclonal Antibody

Product data:

Product Type:	Primary Antibodies
Applications:	ELISA, WB
Recommended Dilution:	Direct ELISA: To detect Murine RELM β (using 100 μ l/well antibody solution) a concentration of ~1.0 μ g/ml of this antibody is required. In conjunction with compatible secondary reagents, it allows the detection of at least 0.2-0.4 ng/well of recombinant Murine RELM β . Sandwich ELISA: To detect Murine RELM β (using 100 μ l/well antibody solution) a concentration of 0.25-1.0 μ g/ml of this antibody is required. In conjunction with Polyclonal Anti-Murine RELM β as a capture antibody (Cat.-No AP01134PU), it allows the detection of at least 0.2-0.4 ng/well of recombinant Murine RELM β . Western Blot: To detect Murine RELM β by Western Blot analysis this antibody can be used at a concentration of 0.1-0.2 μ g/ml. Used in conjunction with compatible secondary reagents the detection limit for recombinant mRELM β is 1.5-3.0 ng/lane, under either reducing or non-reducing conditions.
Reactivity:	Mouse
Host:	Rabbit
Clonality:	Polyclonal
Immunogen:	Highly pure (> 98 %) E.coli derived recombinant murine RELM β (Cat.-No PA260)
Specificity:	This antibody detects Mouse RELM beta. Other species not tested.
Formulation:	PBS, pH 7.2 Label: Biotin State: Lyophilized (Sterile filtered) purified Ig fraction
Reconstitution Method:	Restore in sterile PBS containing 0.1% BSA to a concentration of 0.1-1.0 mg/ml. Centrifuge vial prior to opening.
Purification:	Affinity Chromatography
Conjugation:	Biotin
Storage:	Store lyophilized at 2-8°C for 6 months or at -20°C long term. After reconstitution store the antibody undiluted at 2-8°C for one month or (in aliquots) at -20°C long term. Avoid repeated freezing and thawing.



[View online »](#)

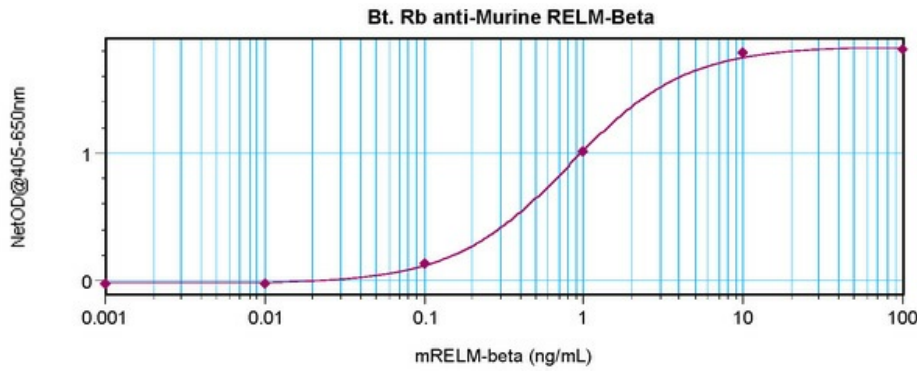
Stability: Shelf life: one year from despatch.

Gene Name: resistin like beta

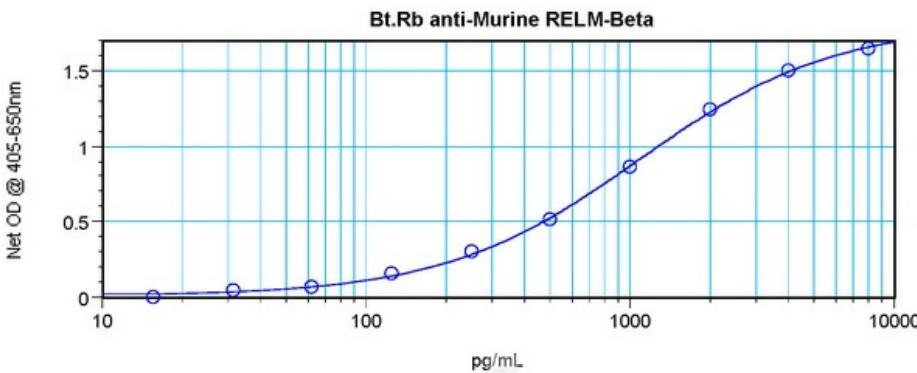
Database Link: [Entrez Gene 57263 Mouse Q99P86](#)

Synonyms: Resistin-like beta, RELMbeta, RELM-beta RETNLB, CCRG, FIZZ2, HXCP2, RETNL2

Product images:



Direct ELISA using RELM beta Antibody Cat.-No AP01134BT



Sandwich ELISA using RELM beta Antibody Cat.-No AP01134BT