

Product datasheet for **AP01130PU-N**

IL21 Rabbit Polyclonal Antibody

Product data:

Product Type:	Primary Antibodies
Applications:	ELISA, WB
Recommended Dilution:	Sandwich ELISA: To detect Human IL-21 by Sandwich ELISA (using 100 µl/well antibody solution) a concentration of 0.5-2.0 µg/ml of this antibody is required. In conjunction with Biotinylated Anti-Human IL-21 (AP01130BT-N or AP01130BT-S) as a detection antibody, it allows the detection of at least 0.2-0.4 ng/well of recombinant Human IL-21. Western Blot: To detect Human IL-21 by Western Blot analysis this antibody can be used at a concentration of 0.1-0.2 µg/ml. Used in conjunction with compatible secondary reagents the detection limit for recombinant Human IL-21 is 1.5-3.0 ng/lane, under either reducing or non-reducing conditions.
Reactivity:	Human
Host:	Rabbit
Clonality:	Polyclonal
Immunogen:	Highly pure (> 98%) E.coli derived recombinant Human IL-21
Specificity:	This antibody detects Interleukin-21.
Formulation:	PBS, pH 7.2 State: Aff - Purified State: Sterile filtered, lyophilized purified Ig fraction
Reconstitution Method:	Centrifuge vial prior to opening. Restore in sterile Water to a concentration of 0.1-1.0 mg/ml.
Purification:	Affinity chromatography employing immobilized hIL-21 matrix
Conjugation:	Unconjugated
Storage:	Store lyophilized at 2-8°C for 6 months or at -20°C long term. After reconstitution store the antibody undiluted at 2-8°C for one month or (in aliquots) at -20°C long term. Avoid repeated freezing and thawing.
Stability:	Shelf life: one year from despatch.
Gene Name:	interleukin 21



[View online »](#)

Database Link: [Entrez Gene 59067 Human Q9HBE4](#)

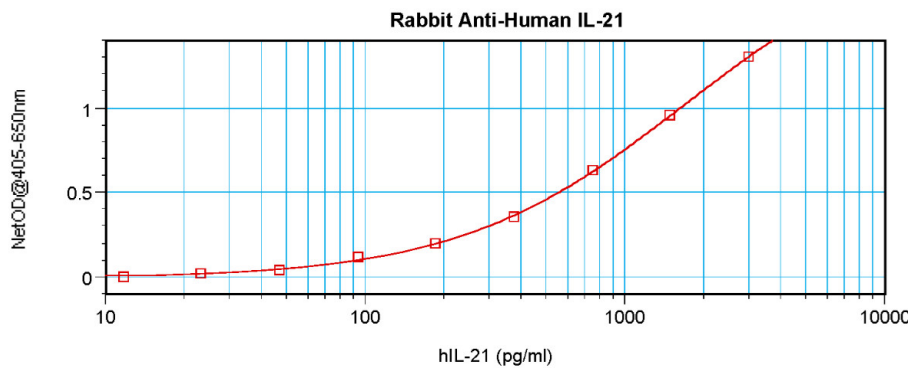
Background: A novel cytokine related to IL2 and IL15 was recently identified and designated IL21. IL21 has been found to be a powerful growth factor for naive B cells. The receptor for IL21 (IL21R, also termed NILR for novel Interleukin receptor) is a new member of the class I cytokine receptor family. IL21R forms a complex with the common cytokine receptor γ chain, γc , and mediates IL21 signaling. Both IL21R and the γc are necessary for the IL21 function. IL21 and its receptor activate JAK/STAT signaling pathway. IL21R is expressed in spleen, thymus, natural killer (NK), T and B cell lines. IL21 plays a role in the proliferation and maturation of NK, B and T cell populations.

Synonyms: IL-21, Za11

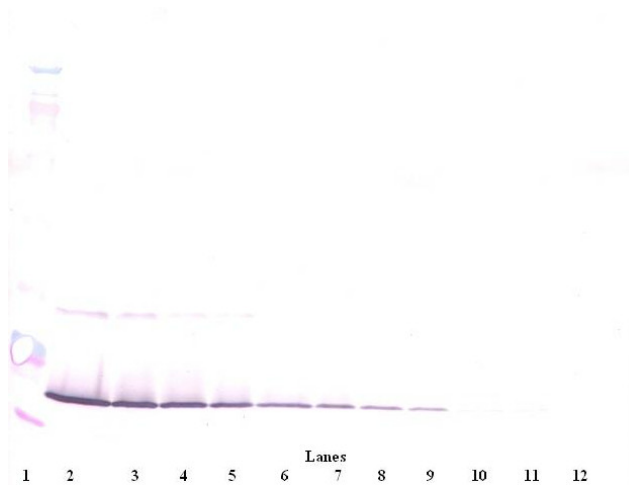
Protein Families: Druggable Genome, Secreted Protein

Protein Pathways: Cytokine-cytokine receptor interaction, Jak-STAT signaling pathway

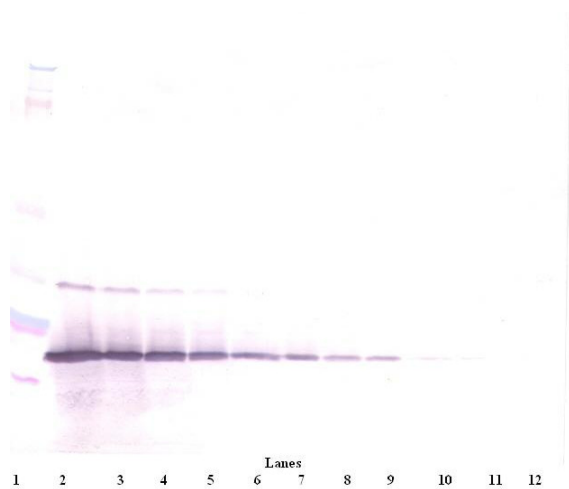
Product images:



Sandwich ELISA using Interleukin-21 / IL21 antibody AP01130PU



Western Blot un-reduced using Interleukin-21 / IL21 antibody AP01130PU



Western Blot reduced using Interleukin-21 / IL21 antibody AP01130PU