

Product datasheet for **AP01119BT-S**

LOC105242483 Rabbit Polyclonal Antibody

Product data:

Product Type:	Primary Antibodies
Applications:	ELISA, WB
Recommended Dilution:	Direct ELISA: To detect Mouse MCP-2 (using 100 µl/well antibody solution) a concentration of ~1.0 µg/ml is required. This biotinylated polyclonal antibody, in conjunction with compatible secondary reagents, allows the detection of at least 2000-4000 pg/well of recombinant Mouse MCP-2. Sandwich ELISA: To detect Mouse MCP-2 by Sandwich ELISA (using 100 µl/well antibody solution) a concentration of 0.25-1.0 µg/ml of this antibody is required. In conjunction with Polyclonal Anti-Murine MCP-2 as a capture antibody, it allows the detection of at least 2000-4000 pg/well of recombinant Mouse MCP-2. Western Blot: To detect Mouse MCP-2 by Western Blot analysis this antibody can be used at a concentration of 0.1-0.2 µg/ml. Used in conjunction with compatible secondary reagents the detection limit for recombinant Mouse MCP-2 is 1.5-3.0 ng/lane, under either reducing or non-reducing conditions.
Reactivity:	Mouse
Host:	Rabbit
Clonality:	Polyclonal
Immunogen:	Highly pure (>98%) E.coli derived Recombinant Murine MCP-2 (CCL8) (<i>Cat.-No</i> P193)
Specificity:	This antibody detects Mouse Macrophage Chemotactic Protein-2. Other species not tested.
Formulation:	PBS, pH 7.2 Label: Biotin State: Lyophilized Sterile filtered Ig fraction
Reconstitution Method:	Centrifuge vial prior to opening. Restore in sterile PBS containing 0.1% BSA to a concentration of 0.1-1.0 mg/ml.
Purification:	Affinity chromatography
Conjugation:	Biotin
Storage:	Store lyophilized at 2-8°C for 6 months or at -20°C long term. After reconstitution store the antibody undiluted at 2-8°C for one month or (in aliquots) at -20°C long term. Avoid repeated freezing and thawing.



[View online »](#)

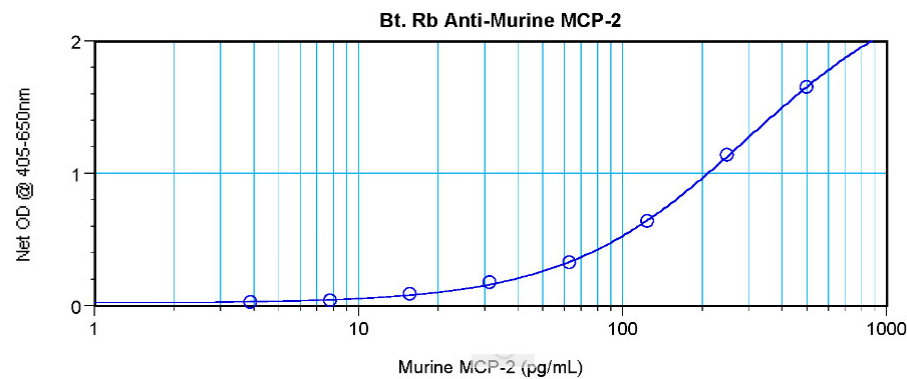
Stability: Shelf life: one year from despatch.

Database Link: [Entrez Gene 105242483 Mouse Q9Z121](#)

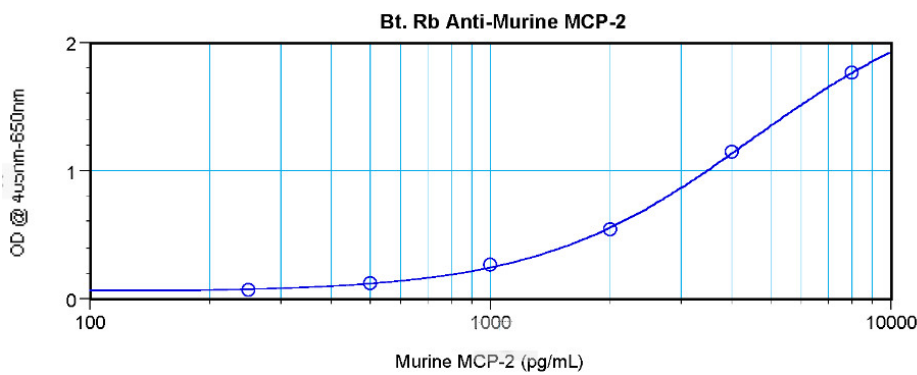
Background: MCP 2 (Monocyte Chemoattractant Protein 2) is a chemotactic factor that attracts monocytes, lymphocytes, basophils and eosinophils. MCP 2 is important to inflammatory host responses, and is found in the highest concentration in the small intestine and peripheral blood cells. This protein is structurally related to the CXC subfamily of cytokines. Members of this subfamily are characterized by two cysteines separated by a single amino acid. By recruiting leukocytes to sites of inflammation this cytokine may contribute to tumor-associated leukocyte infiltration and to the antiviral state against HIV infection.

Synonyms: MCP-2, CCL-8, C-C motif chemokine 8, Small-inducible cytokine A8, SCYA10, SCYA8, HC14, MCP-2

Product images:



Sandwich ELISA using MCP2 / CCL8 Antibody Cat.-No AP01119BT



Direct ELISA using MCP2 / CCL8 Antibody Cat.-No AP01119BT