

Product datasheet for **AP01118PU-N**

IL17 (IL17A) Goat Polyclonal Antibody

Product data:

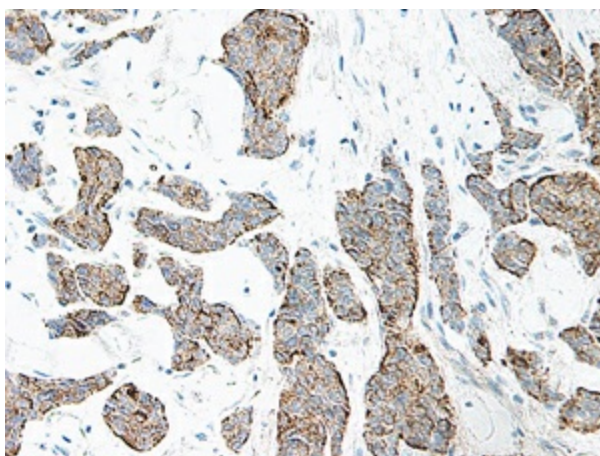
Product Type:	Primary Antibodies
Applications:	ELISA, IHC, Neutralize, WB
Recommended Dilution:	<p>Indirect ELISA: To detect hIL-17A by indirect ELISA (using 100 µl/well antibody solution) a concentration of 0.5-2.0 µg/ml of this antibody is required. In conjunction with compatible secondary reagents, it allows the detection of at least 0.2-0.4 ng/well of recombinant hIL-17A.</p> <p>Sandwich ELISA: To detect Human IL-17A by Sandwich ELISA (using 100 µl/well antibody solution) a concentration of 0.5-2.0 µg/ml of this antibody is required. In conjunction with Biotinylated Anti-Human IL-17A as a detection antibody, it allows the detection of at least 0.2-0.4 ng/well of recombinant hIL-17A.</p> <p>Western Blot: To detect Human IL-17A by Western Blot analysis this antibody can be used at a concentration of 0.1-0.2 µg/ml. Used in conjunction with compatible secondary reagents the detection limit for recombinant hIL-17A is 1.5-3.0 ng/lane, under either reducing or non-reducing conditions.</p> <p>Neutralization: To yield one-half maximal inhibition [ND₅₀] of the biological activity of Human IL-17A (50.00 ng/ml), a concentration of 0.43-0.65 µg/ml of this antibody is required.</p> <p>Immunohistochemistry on Paraffin Sections: 0.125-0.25 µg/ml with an overnight incubation at 4°C.</p> <p>This antibody stained Formalin-Fixed, Paraffin-Embedded sections of Human breast invasive ductal carcinoma. An HRP-labeled polymer detection system was used with a DAB chromogen. Heat induced antigen retrieval with a pH 6.0 Sodium Citrate buffer is recommended.</p>
Reactivity:	Human
Host:	Goat
Clonality:	Polyclonal
Immunogen:	Highly pure (> 98%) E.coli derived recombinant Human IL-17A (Cat.-No PA090)
Specificity:	This antibody detects Human Interleukin-17A. Other species not tested.
Formulation:	<p>PBS, pH 7.2</p> <p>State: Aff - Purified</p> <p>State: Lyophilized (Sterile filtered) purified Ig fraction</p>
Reconstitution Method:	<p>Centrifuge vial prior to opening.</p> <p>Restore in sterile water to a concentration of 0.1-1.0 mg/ml.</p>



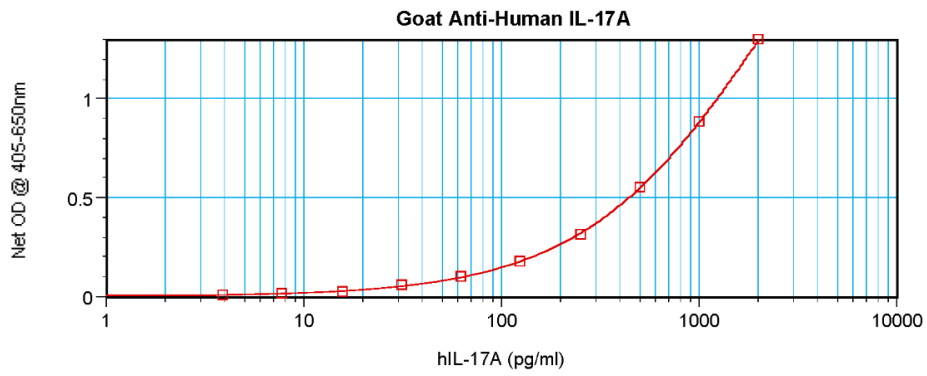
[View online »](#)

Purification:	Affinity Chromatography employing immobilized hIL-17 matrix.
Conjugation:	Unconjugated
Storage:	Prior to reconstitution store at 2-8°C. Following reconstitution store undiluted at 2-8°C for one month or (in aliquots) at -20°C for longer. Avoid repeated freezing and thawing.
Stability:	Shelf life: one year from despatch.
Gene Name:	interleukin 17A
Database Link:	Entrez Gene 3605 Human Q16552
Background:	IL17, also known as CTLA8, is a T cell derived hematopoietic cytokine. It was originally cloned from a T cell hybridoma produced by fusion of a mouse cytotoxic T cell clone and a rat T lymphoma. IL17 exhibits multiple biological activities on a variety of cells including: the induction of IL6, IL8 and GCSF production in fibroblasts; the enhancement of surface expression of ICAM 1 in fibroblasts; activation of NF kappaB and costimulation of T cell proliferation. IL17 is an approximately 16 kDa polypeptide of 136 amino acids. The precursor form of IL17 consists of 155 amino acids. To generate the mature IL17 (136 amino acids), the precursor cleaves a 19 amino acid signal peptide. Human IL17 shows approximately 62.5% amino acid homology to mouse IL17 and 58% amino acid homology to rat IL17.
Synonyms:	IL-17A, IL17, IL-17, CTLA8, CTLA-8
Protein Families:	Druggable Genome, Secreted Protein
Protein Pathways:	Cytokine-cytokine receptor interaction

Product images:



Formalin-Fixed, Paraffin-Embedded sections of human breast invasive ductal carcinoma stained with IL17A Antibody Cat.-No AP01118PU-N. Tissue samples were provided by the Cooperative Human Tissue Network, which is funded by the National Cancer Institute.



Sandwich ELISA using IL17A Antibody Cat.-No AP01118PU-N