

## Product datasheet for AP01112PU-N

### VEGFA Goat Polyclonal Antibody

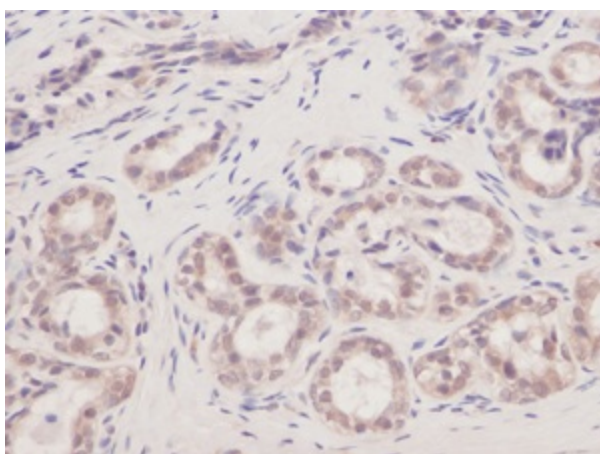
#### Product data:

|                        |  |
|------------------------|--|
| Product Type:          | Primary Antibodies   |
| Applications:          | ELISA, FN, WB  |
| Recommended Dilution:  | <b>Neutralization:</b> To yield one-half maximal inhibition [ND50] of the biological activity of Human VEGF (10 ng/ml), a concentration of 0.05-0.1 µg/ml of this antibody is required.<br><b>Sandwich ELISA:</b> To detect Human VEGF by Sandwich ELISA (using 100 µl/well antibody solution) a concentration of 0.5-2.0 µg/ml is required. In conjunction with Biotinylated Anti-Human VEGF (AP01112BT-S or AP01112BT-N) as a Detection antibody, it allows the detection of at least 0.2-0.4 ng/well of recombinant Human VEGF.<br><b>Western Blot:</b> To detect Human VEGF by Western Blot analysis this antibody can be used at a concentration of 0.1-0.2 µg/ml. Used in conjunction with compatible secondary reagents the detection limit for recombinant Human VEGF is 1.5-3.0 ng/lane, under either reducing or non-reducing conditions.<br><b>Immunohistochemistry:</b> 5.0-15.0 µg/ml with 30 minutes at RT or an overnight incubation at 4°C. This antibody stained Formalin-Fixed, Paraffin-Embedded sections of Human breast invasive ductal carcinoma. An HRP-labeled polymer detection system was used with a DAB chromogen. This antibody was also tested in an HRP-Biotin labeling detection system. Heat induced antigen retrieval with pH6.0 Sodium Citrate buffer is recommended. |
| Reactivity:            | Human  |
| Host:                  | Goat   |
| Clonality:             | Polyclonal   |
| Immunogen:             | Highly pure (> 98%) <i>E.coli</i> derived recombinant Human VEGF165 (Cat.-No PA136)  |
| Specificity:           | This antibody recognizes Human VEGF.<br>Other species not tested.  |
| Formulation:           | PBS, pH 7.2<br>State: Purified<br>State: Sterile filtered, lyophilized Ig fraction   |
| Reconstitution Method: | Restore in sterile water to a concentration of 0.1-1.0 mg/ml.  |
| Purification:          | Immunoaffinity Chromatography  |
| Conjugation:           | Unconjugated   |



[View online »](#)

|                       |   |
|-----------------------|---|
| <b>Storage:</b>       | Store lyophilized at 2-8°C for 6 months or at -20°C long term.<br>After reconstitution store the antibody undiluted at 2-8°C for one month or (in aliquots) at -20°C long term.<br>Avoid repeated freezing and thawing. |
| <b>Stability:</b>     | Shelf life: one year from despatch.   |
| <b>Gene Name:</b>     | vascular endothelial growth factor A  |
| <b>Database Link:</b> | <a href="#">Entrez Gene 7422 Human P15692</a>   |
| <b>Synonyms:</b>      | VEGFA, VEGF, VPF, Vascular endothelial growth factor A, Vascular permeability factor  |
| <b>Note:</b>          | Centrifuge vial prior to opening.   |

**Product images:**

Immunohistochemistry: This antibody stained formalin-fixed, paraffin-embedded sections of human breast invasive ductal carcinoma. The recommended concentrations are 5.0 µg/ml-15.0 µg/ml with a 30 minute incubation at room temperature or an overnight incubation at 4C. Tissue samples were provided by the Cooperative Human Tissue Network which is funded by the National Cancer Institute.