

## Product datasheet for **AP01109PU-N**

### IGFBP7 Rabbit Polyclonal Antibody

#### Product data:

Product Type:	Primary Antibodies
Applications:	ELISA, IF, WB
Recommended Dilution:	<p><b>Sandwich ELISA:</b> To detect Human IGF-BP7 (using 100 µl/well antibody solution) a concentration of 0.5-2.0 µg/ml of this antibody is required. In conjunction with Biotinylated Anti-Human IGF-BP7 (<i>Cat.-No</i> AP01109BT-N or AP01109BT-S) as a detection antibody, it allows the detection of at least 0.2-0.4 ng/well of recombinant Human IGF-BP7.</p> <p><b>Western Blot:</b> To detect Human IGF-BP7 this antibody can be used at a concentration of 0.1-0.2 µg/ml. Used in conjunction with compatible secondary reagents the detection limit for recombinant Human IGF-BP7 is 1.5-3.0 ng/lane, <i>under either reducing or non-reducing conditions</i>.</p> <p><b>Immunostaining:</b> This antibody stained HeLa and U-251 MG cells. The primary antibody was incubated at 2.0 µg/ml overnight at 4°C followed by a Fluorescent labeled secondary antibody.</p>
Reactivity:	Human
Host:	Rabbit
Clonality:	Polyclonal
Immunogen:	Highly pure (> 98%) E.coli derived recombinant Human IGFBP7 ( <i>Cat.-No</i> AR09501PU).
Specificity:	This antibody detects Human IGFBP7. Other species not tested.
Formulation:	PBS, pH 7.2 State: Aff - Purified State: Lyophilized (sterile filtered) purified Ig fraction
Reconstitution Method:	Restore in sterile water to a concentration of 0.1-1.0 mg/ml.
Purification:	Affinity Chromatography employing immobilized Human IGF-BP7 matrix
Conjugation:	Unconjugated
Storage:	Store lyophilized at 2-8°C for 6 months or at -20°C long term. After reconstitution store the antibody undiluted at 2-8°C for one month or (in aliquots) at -20°C long term. Avoid repeated freezing and thawing.



[View online »](#)

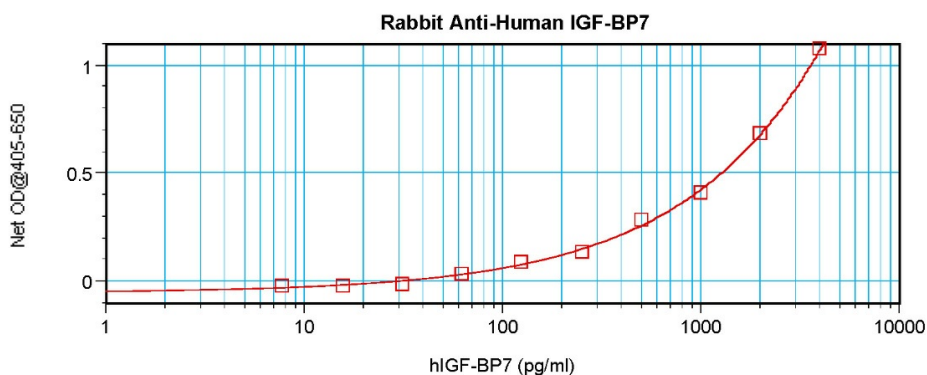
**Stability:** Shelf life: one year from despatch.  
**Gene Name:** insulin like growth factor binding protein 7  
**Database Link:** [Entrez Gene 3490 Human Q16270](#)

**Background:** IGF-BPs form high affinity complexes with both IGF-I and IGF-II and act to control of the distribution, function and activity of IGFs in various cell tissues and body fluids. There are seven named IGF-BPs. IGFBP7 plays a role in skeletal myogenesis by binding to IGF in a manner that inhibits IGF induced differentiation of skeletal myoblasts, without affecting IGF induced proliferation. Additionally, IGFBP7 suppresses growth and colony formation of prostate and breast cancer cell lines through an IGF independent mechanism, which causes a delay in the G1 phase of the cell cycle, and increased apoptosis. IGFBP7 is expressed in a wide range of normal human tissues and it usually shows reduced expression in cancer cell lines of prostate, breast, colon, and lung origin.

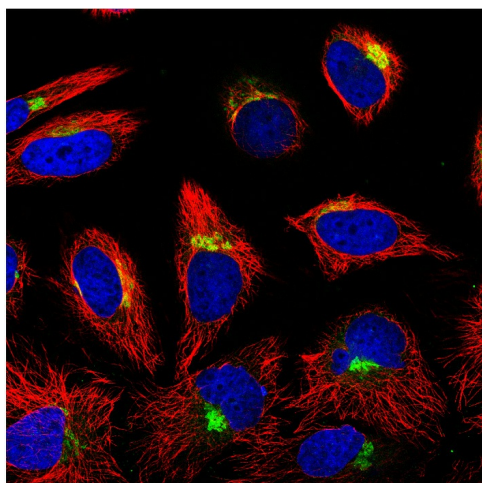
**Synonyms:** IGF-binding protein 7, IGFBP-7, IBP7, IBP-7, IGFBP-rP1, MAC25, PSF, TAF

**Note:** Centrifuge vial prior to opening.

### Product images:



Sandwich ELISA using IGFBP7 Antibody Cat.-No AP01109PU



This antibody stained HeLa and U-251 MG cells. The primary antibody was incubated at 2.0 ug/ml overnight at 4°C followed by a fluorescent labeled secondary antibody. Optimal concentrations and conditions may vary. Information and photo are courtesy of the Cell Profiling group, SciLifeLab Stockholm.