

## Product datasheet for **AP01083PU-N**

### Lactoferrin (LTF) Sheep Polyclonal Antibody

#### Product data:

Product Type:	Primary Antibodies
Applications:	ELISA, IHC
Recommended Dilution:	Immunohistochemistry on Frozen and Paraffin Sections: requires antigen retrieval using heat treatment prior to staining, Sodium citrate buffer pH 6.0 is recommended for this purpose. ELISA: 1/200-1/2000. <b>Positive Control:</b> Human mammary gland.
Reactivity:	Canine, Human
Host:	Sheep
Clonality:	Polyclonal
Immunogen:	Highly pure lactoferrin from human milk.
Specificity:	This antibody recognises human Lactoferrin (LF), also known as Lactotransferrin (LTF), a 78.1kDa secreted protein belonging to the transferrin family of proteins. It is reported to work well in formalin fixed paraffin embedded sections of mammary glands but does not stain canine neutrophils.
Formulation:	PBS, containing 0.09% Sodium Azide as preservative. State: Aff - Purified State: Liquid purified Ig fraction.
Concentration:	lot specific
Purification:	Protein G chromatography.
Conjugation:	Unconjugated
Storage:	Store the antibody undiluted at 2-8°C for one month or (in aliquots) at -20°C for longer. Avoid cycles of freezing and thawing.
Stability:	Shelf life: One year from despatch.
Gene Name:	lactotransferrin
Database Link:	<a href="#">Entrez Gene 4057 Human P02788</a>



[View online »](#)

**Background:**

Lactoferrin is a multifunctional protein with microbial activity. It inhibits the ability of bacteria and viruses to attach to cell membranes, additionally it acts as an antifungal agent. Research has indicated that lactoferrin may also have a role in inhibiting the formation of protease resistant prion proteins.

Lactoferrin occurs in milk and mucosal secretions including tears and saliva. It has also been detected in a range of cell types including brush border cells, PMN, monocytes, macrophages and activated lymphocytes. Highest concentrations are found in human colostrum.

**Synonyms:**

LTF, LF, Lactoferrin, EC=3.4.21, Talalactoferrin

**Product images:**

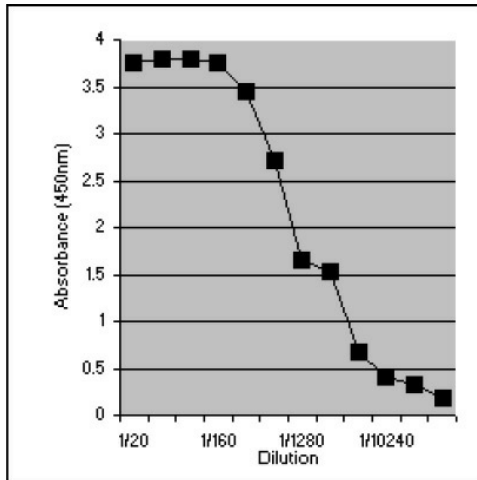


Figure 1. Human Lactoferrin detected with Sheep anti Human Lactoferrin.