

Product datasheet for **AP00662SU-N**

PDE11A Rabbit Polyclonal Antibody

Product data:

Product Type:	Primary Antibodies
Applications:	IHC, IP, WB
Recommended Dilution:	Immunohistochemistry. Immunoprecipitation. Western blot (1:5000).
Reactivity:	Human, Mouse, Rat
Host:	Rabbit
Clonality:	Polyclonal
Immunogen:	Designed from the C-terminal region common to all known 11A isoforms.
Specificity:	The antibody selectively detects proteins corresponding to members of the PDE11A sub-family (Figure 1).
Formulation:	State: Serum State: Liquid diluted serum
Conjugation:	Unconjugated
Storage:	Store the antibody undiluted at 2-8°C for one month or (in aliquots) at -20°C for longer. Avoid repeated freezing and thawing.
Stability:	Shelf life: one year from despatch.
Gene Name:	phosphodiesterase 11A
Database Link:	Entrez Gene 50940 Human Q9HCR9
Background:	Cyclic nucleotide phosphodiesterases (PDEs) catalyse the hydrolytic inactivation of the common intracellular second messengers cyclic adenosine and guanosine 3', 5'-monophosphate (cAMP and cGMP). Thus, these enzymes play a critical role in the regulation of a wide range of physiological processes modulated by cyclic nucleotide signalling. The PDE11 enzyme belongs to a family of PDEs able to hydrolyse both intracellular second messengers, cAMP and cGMP.
Synonyms:	Phosphodiesterase 11A, PDE11A1, PDE11A2, PDE11A3, PDE11A4



[View online »](#)

Product images:

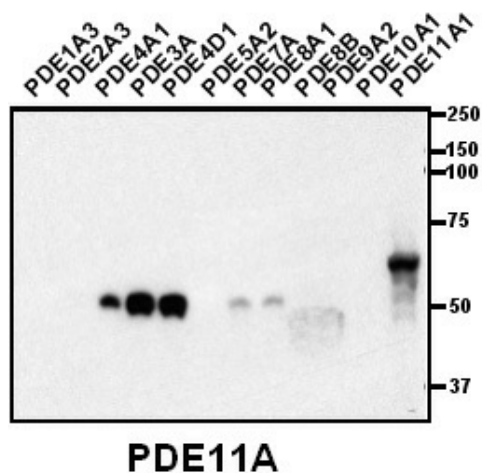


Figure 1: Western blot using anti-PDE11A antibody (1:5,000) against lysate from Insect cells transfected with the indicated human PDE isoform.