

Product datasheet for **AP00661SU-N**

PDE10A Rabbit Polyclonal Antibody

Product data:

Product Type:	Primary Antibodies
Applications:	IHC, IP, WB
Recommended Dilution:	Western blot. Immunoprecipitation. Immunohistochemistry.
Reactivity:	Human, Mouse, Rat
Host:	Rabbit
Clonality:	Polyclonal
Immunogen:	Designed from the C-terminal region common to the 10A enzyme
Specificity:	The antibody selectively detects proteins corresponding to the PDE10A enzyme Figure 1
Formulation:	State: Serum State: Liquid Diluted Serum
Conjugation:	Unconjugated
Storage:	Store undiluted at 2-8°C for one month or (in aliquots) at -80°C for longer. Avoid repeated freezing and thawing.
Stability:	Shelf life: one year from despatch.
Gene Name:	phosphodiesterase 10A
Database Link:	Entrez Gene 10846 Human Q9Y233
Background:	Cyclic nucleotide phosphodiesterases (PDEs) catalyse the hydrolytic inactivation of the common intracellular second messengers cyclic adenosine and guanosine 3', 5'-monophosphate (cAMP and cGMP). Thus, these enzymes play a critical role in the regulation of a wide range of physiological processes modulated by cyclic nucleotide signalling. The PDE10 enzyme belongs to a family of PDEs that hydrolyse both cAMP and cGMP.
Synonyms:	Phosphodiesterase 10A, HSPDE10A



[View online »](#)

Product images:

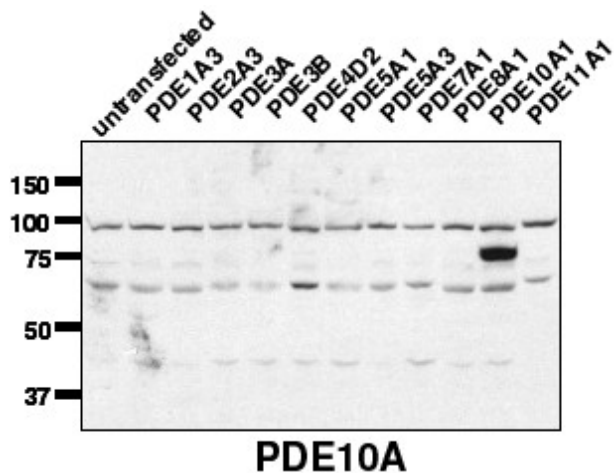


Figure 1. Western blot using AP00661SU-N (1/20,000) against lysate from COS cells transfected with the indicated Human PDE isoform.