

Product datasheet for **AP00659SU-N**

PDE7A Rabbit Polyclonal Antibody

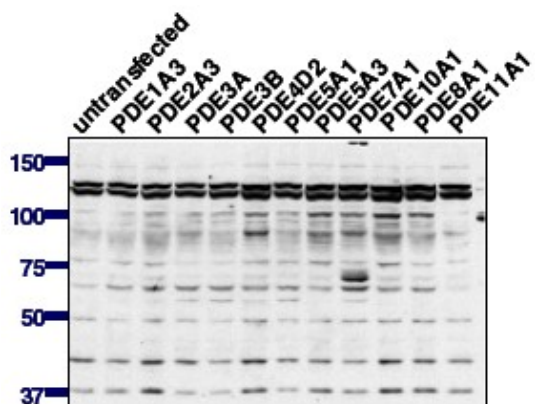
Product data:

Product Type:	Primary Antibodies
Applications:	IHC, IP, WB
Recommended Dilution:	Western blot. Immunohistochemistry. Immunoprecipitation.
Reactivity:	Human, Mouse, Rat
Host:	Rabbit
Clonality:	Polyclonal
Immunogen:	Designed from the C-terminal region common to the 7A isoform.
Specificity:	The antibody selectively detects proteins corresponding to the PDE7A1 isoform.
Formulation:	State: Serum State: Liquid diluted serum
Conjugation:	Unconjugated
Storage:	Store at 4 °C. For long term storage, aliquot and store at -80 °C.
Stability:	Shelf life: One year from despatch.
Gene Name:	phosphodiesterase 7A
Database Link:	Entrez Gene 5150 Human Q13946
Background:	Cyclic nucleotide phosphodiesterases (PDEs) catalyse the hydrolytic inactivation of the common intracellular second messengers cyclic adenosine and guanosine 3', 5'-monophosphate (cAMP and cGMP). Thus, these enzymes play a critical role in the regulation of a wide range of physiological processes modulated by cyclic nucleotide signalling. The PDE7 enzyme belongs to a family of cAMP-dependent PDEs that provide the major means of inactivating the key intracellular second messenger, cAMP. Two genes (PDE7A and PDE7B) encode the PDE7 family, each with multiple splice variants.
Synonyms:	Phosphodiesterase 7A, PDE7, HCP1, TM22



[View online »](#)

Product images:



PDE7A

Western blot using AP00659SU-N (1:2,000) against lysate from COS cells transfected with the indicated human PDE isoform.