

## Product datasheet for **AP00658SU-N**

### PDE5A Rabbit Polyclonal Antibody

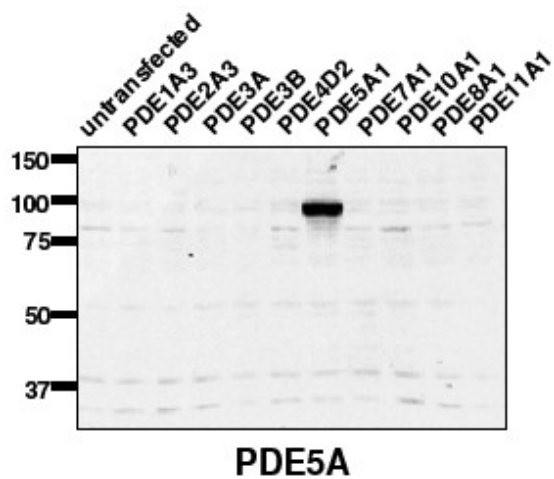
#### Product data:

Product Type:	Primary Antibodies
Applications:	IHC, IP, WB
Recommended Dilution:	<b>Western blot.</b> <b>Immunohistochemistry.</b> <b>Immunoprecipitation.</b>
Reactivity:	Human, Mouse, Rat
Host:	Rabbit
Clonality:	Polyclonal
Immunogen:	Designed from the C-terminal region common to the 5A isoform.
Specificity:	The antibody selectively detects proteins corresponding to the PDE5A.
Formulation:	State: Serum State: Liquid diluted serum
Conjugation:	Unconjugated
Storage:	Store undiluted at 2-8°C for one month or (in aliquots) at -20°C to -80°C for longer. Avoid repeated freezing and thawing.
Stability:	Shelf life: one year from despatch.
Gene Name:	phosphodiesterase 5A
Database Link:	<a href="#">Entrez Gene 8654 Human O76074</a>
Background:	Cyclic nucleotide phosphodiesterases (PDEs) catalyse the hydrolytic inactivation of the common intracellular second messengers cyclic adenosine and guanosine 3', 5'-monophosphate (cAMP and cGMP). Thus, these enzymes play a critical role in the regulation of a wide range of physiological processes modulated by cyclic nucleotide signalling. The PDE5 enzyme belongs to a family of cGMP-dependent PDEs that provide the major means of inactivating the key intracellular second messenger, cGMP.
Synonyms:	PDE5, cGMP-specific 3',5'-cyclic phosphodiesterase, EC=3.1.4.35, cGMP-binding cGMP-specific phosphodiesterase, CGB-PDE



[View online »](#)

## Product images:



Western blot using AP00658SU-N (1/2,000) against lysate from COS cells transfected with the indicated human PDE isoform.