

## Product datasheet for **AP00655SU-N**

### PDE4A Rabbit Polyclonal Antibody

#### Product data:

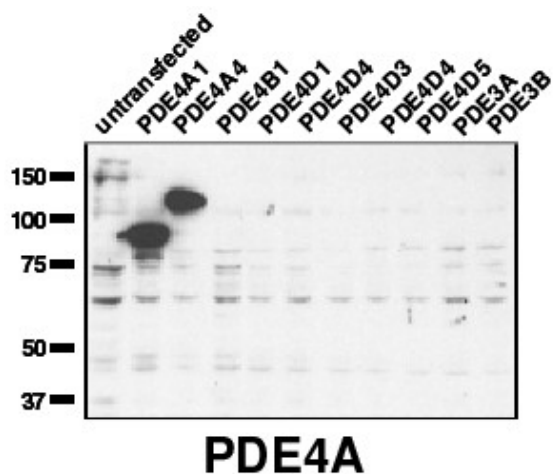
Product Type:	Primary Antibodies
Applications:	IHC, IP, WB
Recommended Dilution:	Western blot (1:20000). Immunohistochemistry. Immunoprecipitation.
Reactivity:	Human, Mouse, Rat
Host:	Rabbit
Clonality:	Polyclonal
Immunogen:	Designed from the C-terminal region common to all known 4A isoforms
Specificity:	The antibody selectively detects proteins corresponding to members of the PDE4A sub-family.
Formulation:	State: Serum State: Liquid diluted serum
Conjugation:	Unconjugated
Storage:	Store the antibody undiluted at 2-8°C for one month or (in aliquots) at -20°C for longer. Avoid repeated freezing and thawing.
Stability:	Shelf life: one year from despatch.
Gene Name:	phosphodiesterase 4A
Database Link:	<a href="#">Entrez Gene 5141 Human P27815</a>
Background:	Cyclic nucleotide phosphodiesterases (PDEs) catalyse the hydrolytic inactivation of the common intracellular second messengers cyclic adenosine and guanosine 3', 5'-monophosphate (cAMP and cGMP). Thus, these enzymes play a critical role in the regulation of a wide range of physiological processes modulated by cyclic nucleotide signalling. The PDE4 enzyme belongs to a family of cAMP-dependent PDEs that provide the major means of inactivating the key intracellular second messenger, cAMP. Four genes (4A, 4B, 4C, and 4D) encode around 20 distinct isoform members of the PDE4 family. Each isoform is characterized by a unique N-terminal region.



[View online »](#)

**Synonyms:** Phosphodiesterase 4A, Phosphodiesterase-4A cAMP-specific, PDE46, PDE4, DPDE2, PDE4A4, PDE4A4B, PDE4A11, PDE4A7, PDE4A6, PDE4A1, RD1, PDE4A8A, 2EL, PDE4A10, PDE4A8

**Product images:**



Western blot using AP00655SU-N (1:2,000) against lysate from COS cells transfected with the indicated human PDE isoform.