

## Product datasheet for **AP00653SU-N**

### PDE3A Rabbit Polyclonal Antibody

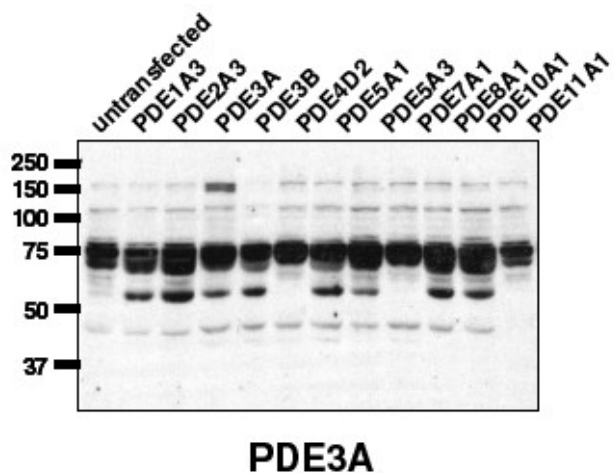
#### Product data:

Product Type:	Primary Antibodies
Applications:	IHC, IP, WB
Recommended Dilution:	Western blot (see picture below). Immunohistochemistry. Immunoprecipitation.
Reactivity:	Human, Mouse, Rat
Host:	Rabbit
Clonality:	Polyclonal
Immunogen:	Designed from the C-terminal region common to the 3A isoform.
Specificity:	The antibody selectively detects proteins corresponding to PDE3A.
Formulation:	State: Serum State: Liquid diluted serum
Conjugation:	Unconjugated
Storage:	Store the antiserum at 2-8°C for one month or (in aliquots) at -20°C to -80°C for longer. Avoid repeated freezing and thawing.
Stability:	Shelf life: one year from despatch.
Gene Name:	phosphodiesterase 3A
Database Link:	<a href="#">Entrez Gene 5139 Human Q14432</a>
Background:	Cyclic nucleotide phosphodiesterases (PDEs) catalyse the hydrolytic inactivation of the common intracellular second messengers cyclic adenosine and guanosine 3', 5'-monophosphate (cAMP and cGMP). Thus, these enzymes play a critical role in the regulation of a wide range of physiological processes modulated by cyclic nucleotide signalling. The PDE3 enzyme belongs to a family of PDEs known as cGMP-inhibited PDEs. The enzymes bind both cGMP and cAMP with different affinities. The PDE3 family is comprised of two genes, PDE3A and PDE3B.
Synonyms:	Phosphodiesterase 3A, Phosphodiesterase-3A cGMP-inhibited, CGI-PDE, CGI-PDE A



[View online »](#)

## Product images:



Western blot using AP00653SU-N (1:20,000) against lysate from COS cells transfected with the indicated human PDE isoform