

Product datasheet for **AP00652SU-N**

PDE2A Rabbit Polyclonal Antibody

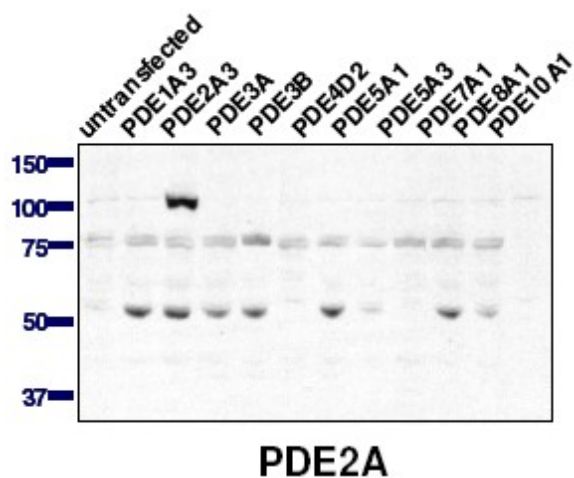
Product data:

Product Type:	Primary Antibodies
Applications:	IHC, IP, WB
Recommended Dilution:	Western blot (1/2000 as a guideline). Immunoprecipitation. Immunohistochemistry.
Reactivity:	Human, Mouse, Rat
Host:	Rabbit
Clonality:	Polyclonal
Immunogen:	Designed from the C-terminal region common to all known 2A isoforms
Specificity:	The antibody selectively detects proteins corresponding to members of the PDE2A sub-family.
Formulation:	PBS containing 0.05% Sodium Azide as preservative State: Serum State: Liquid Diluted Serum
Conjugation:	Unconjugated
Storage:	Store the antibody undiluted at 2-8°C for one month or (in aliquots) at -20°C to -80°C for longer. Avoid repeated freezing and thawing.
Stability:	Shelf life: one year from despatch.
Gene Name:	phosphodiesterase 2A
Database Link:	Entrez Gene 5138 Human O00408
Background:	Cyclic nucleotide phosphodiesterases (PDEs) catalyse the hydrolytic inactivation of the common intracellular second messengers cyclic adenosine and guanosine 3', 5'-monophosphate (cAMP and cGMP). Thus, these enzymes play a critical role in the regulation of a wide range of physiological processes modulated by cyclic nucleotide signalling. The PDE2 enzyme belongs to a family of PDEs able to hydrolyse both intracellular second messengers, cAMP and cGMP.
Synonyms:	CGS-PDE, cGSPDE



[View online »](#)

Product images:



Western blot using AP00652SU-N (1:20,000) against lysate from COS cells transfected with the indicated human PDE isoform.