

Product datasheet for **AP00651SU-N**

PDE1A Rabbit Polyclonal Antibody

Product data:

Product Type:	Primary Antibodies
Applications:	IHC, IP, WB
Recommended Dilution:	Western blot (1/2000 as a guideline). Immunoprecipitation. Immunohistochemistry.
Reactivity:	Human, Mouse, Rat
Host:	Rabbit
Clonality:	Polyclonal
Immunogen:	Designed from the C-terminal region common to all known 1A isoforms.
Specificity:	The antibody selectively detects proteins corresponding to the PDE1A sub-family (See Figure 1).
Formulation:	PBS containing 0.05% Sodium Azide as preservative State: Serum State: Liquid Diluted Serum
Conjugation:	Unconjugated
Storage:	Store undiluted at 2-8°C for one month or (in aliquots) at -20 to -80°C for longer. Avoid repeated freezing and thawing.
Stability:	Shelf life: one year from despatch.
Predicted Protein Size:	61 kDa (Predicted)
Gene Name:	phosphodiesterase 1A
Database Link:	Entrez Gene 5136 Human P54750
Background:	Cyclic nucleotide phosphodiesterases (PDEs) catalyse the hydrolytic inactivation of the common intracellular second messengers cyclic adenosine and guanosine 3',5'-monophosphate (cAMP and cGMP). Thus, these enzymes play a critical role in the regulation of a wide range of physiological processes modulated by cyclic nucleotide signalling. PDE1 has three subtypes, PDE1A, PDE1B and PDE1C. PDE1A and PDE1B have higher affinity for cGMP than for cAMP, whereas PDE1C has high affinity for both cAMP and cGMP.



[View online »](#)

Synonyms: Phosphodiesterase 1A, Phosphodiesterase-1A calmodulin-dependent, Cam-PDE 1A, HSPDE1A, HCAM1, hCam-1

Product images:

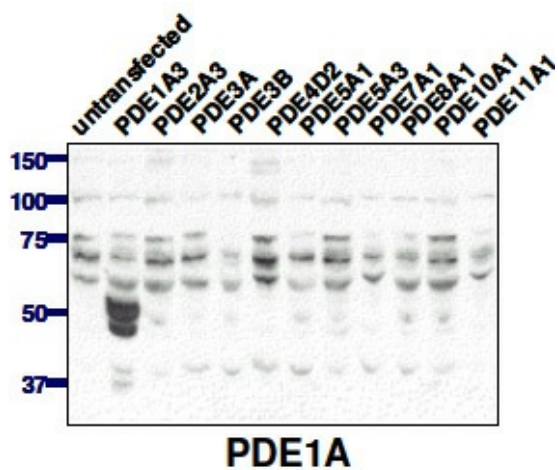


Figure 1: Western blot using anti-PDE1A antibody (1:20,000) against lysate from COS cells transfected with the indicated human PDE isoform.