

## Product datasheet for **AP00591PU-S**

### WNT3A Rabbit Polyclonal Antibody

#### Product data:

Product Type:	Primary Antibodies
Applications:	ELISA, IHC, WB
Recommended Dilution:	<b>Sandwich ELISA:</b> To detect Human WNT-3a by Sandwich ELISA (using 100 µl/well antibody solution) a concentration of 0.5-2.0 µg/ml is required. This affinity purified polyclonal antibody, in conjunction with Biotin conjugated Polyclonal Anti-Human WNT-3a (AP00591BT-N or AP00591BT-S) as a detection antibody, allows the detection of at least 0.2-0.4 ng/well of recombinant Human WNT-3a. <b>Western Blot:</b> To detect Human WNT-3a by Western Blot analysis this antibody can be used at a concentration of 0.1-0.2 µg/ml. Used in conjunction with compatible secondary reagents the detection limit for recombinant hWNT-3a is 1.5-3.0 ng/lane, under either reducing or non-reducing conditions. <b>Immunohistochemistry:</b> 0.125-0.25 µg/ml with an overnight incubation at 4°C. This antibody stained Formalin-Fixed, Paraffin-Embedded sections of Human breast invasive ductal carcinoma. An HRP-labeled polymer detection system was used with a DAB chromogen. Heat induced antigen retrieval with a pH 6.0 Sodium Citrate buffer is recommended. <i>Tissue samples were provided by the Cooperative Human Tissue Network, which is funded by the National Cancer Institute.</i>
Reactivity:	Human
Host:	Rabbit
Clonality:	Polyclonal
Immunogen:	<i>E.Coli</i> derived recombinant Human WNT-3a
Specificity:	This antibody detects Human WNT-3a. Other species not tested.
Formulation:	PBS, pH 7.2 without preservatives State: Aff - Purified State: Lyophilized (sterile filtered) purified Ig fraction
Reconstitution Method:	Restore in sterile water to a concentration of 0.1-1.0 mg/ml.
Purification:	Affinity Chromatography
Conjugation:	Unconjugated



[View online »](#)

**Storage:** Store lyophilized at 2-8°C for 6 months or at -20°C long term.  
After reconstitution store the antibody undiluted at 2-8°C for one month  
or (in aliquots) at -20°C long term.  
Avoid repeated freezing and thawing.

**Stability:** Shelf life: one year from despatch.

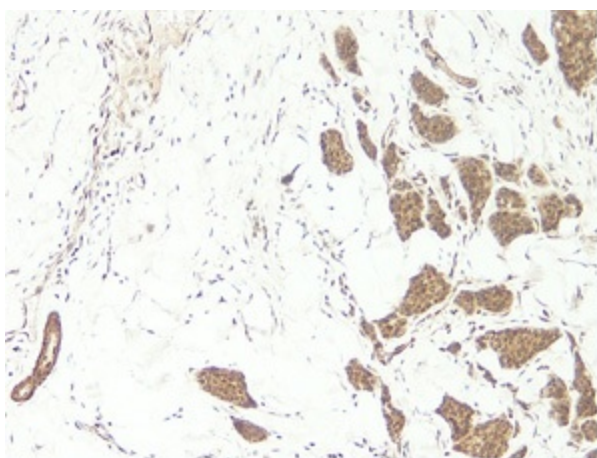
**Gene Name:** Wnt family member 3A

**Database Link:** [Entrez Gene 89780 Human P56704](#)

**Synonyms:** Protein Wnt-3a

**Note:** Centrifuge vial prior to opening.

### Product images:



This antibody stained formalin-fixed, paraffin-embedded sections of human breast invasive ductal carcinoma. The recommended concentration is 0.125 mg/ml-0.25 ug/ml with an overnight incubation at 4°C. An HRP-labeled polymer detection system was used with a DAB chromogen. Heat induced antigen retrieval with a pH 6.0 sodium citrate buffer is recommended. Tissue samples were provided by the Cooperative Human Tissue Network, which is funded by the National Cancer Institute.