

Product datasheet for **AP00345PU-N**

LRP5 + LRP6 Rabbit Polyclonal Antibody

Product data:

Product Type:	Primary Antibodies
Applications:	WB
Recommended Dilution:	Western blot: 0.5-4.0 µg/ml. Jurkat cell lysate can be used as a Positive Control.
Reactivity:	Human, Mouse
Host:	Rabbit
Isotype:	IgG
Clonality:	Polyclonal
Immunogen:	Synthetic peptide surrounding amino acid 437 of Human LRP.
Specificity:	The antibody recognizes the ~170 kDa full length LRP-5/6. A cleavage fragment (~120 kDa) can also be detected.
Formulation:	PBS containing 30% Glycerol, 0.5% BSA and 0.01% Thimerosal as preservative State: Aff - Purified State: Liquid purified Ig fraction
Concentration:	lot specific
Purification:	Affinity Chromatography
Conjugation:	Unconjugated
Storage:	Upon receipt, store the antibody undiluted at -20°C or at -70°C (in aliquots) for long term storage. Avoid repeated freezing and thawing.
Stability:	Shelf life: one year from despatch.
Background:	LDL-related proteins LRP-5 and LRP-6. are members of the LDL receptor superfamily, which were found to be involved in the canonical Wnt signaling pathway. Mammalian LRP-6 was shown to bind to Wnt-1 and enhance Induced-induced developmental processes in Xenopus embryos. Mice lacking LRP-6 exhibited developmental defects that are similar to those caused by deficiencies in various Wnt proteins. Recent work also shows that Wnt proteins induce the binding of LRP-5 to Axin, leading Axin degradation and beta-catenin stabilization.

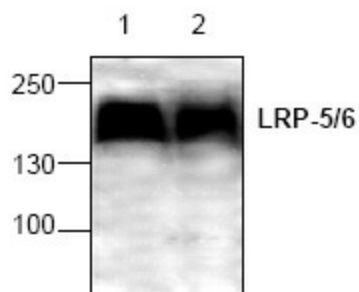


[View online »](#)

Synonyms: LRP5, LRP7, Low-density lipoprotein receptor-related protein 5, LRP6, Low-density lipoprotein receptor-related protein 6

Note: Blocking Peptide (AP00345CP-N) is also available separately.

Product images:



Western blot analysis of LRP-5/6 with Jurkat cell lysate (Lane 1: 100 g; Lane 2: 50 g).