

Product datasheet for **AP00343PU-N**

SGLT1 (SLC5A1) Rabbit Polyclonal Antibody

Product data:

Product Type:	Primary Antibodies
Applications:	IHC, WB
Recommended Dilution:	Western Blot: 0.5-4 µg/ml. Jurkat cell lysate can be used as a Positive Control. Immunohistochemistry: 5 µg/ml.
Reactivity:	Human
Host:	Rabbit
Clonality:	Polyclonal
Immunogen:	Synthetic peptide surrounding amino acid 594 of Human SGLT-1
Specificity:	The antibody detects 73 kDa SGLT-1 from Human samples and in a lesser extent Mouse and Rat. A ~50 kDa cleavage fragment can also be detected in Jurkat cell lysate.
Formulation:	PBS, pH 7.2 containing 30% Glycerol State: Purified State: Liquid purified Ig fraction Stabilizer: 0.5% BSA Preservative: 0.01% Thimerosal
Concentration:	lot specific
Purification:	Affinity Chromatography on Protein A
Conjugation:	Unconjugated
Storage:	Upon receipt, store the antibody undiluted (in aliquots) at -20°C or for long term storage (in aliquots) at -70°C. Avoid repeated freezing and thawing.
Stability:	Shelf life: one year from despatch.
Gene Name:	solute carrier family 5 member 1
Database Link:	Entrez Gene 6523 Human P13866



[View online »](#)

Background:

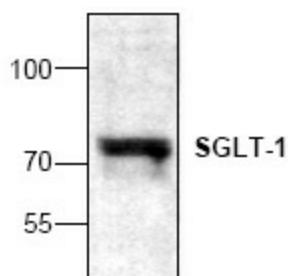
Glucose transporters are integral membrane proteins that mediate the transport of glucose and structurally related substances across cellular membranes. Two families of glucose transporter have been identified: the facilitated diffusion glucose transporter family (GLUT family), also known as *uniporters* and the sodium dependent glucose transporter family (SGLT family) also known as *cotransporters* or *symporters*. The SGLT1 gene encodes a protein that is involved in the active transport of glucose and galactose into eukaryotic and some prokaryotic cells.

Synonyms:

Sodium/glucose cotransporter 1, NAGT

Note:

Blocking Peptide (Cat.-No AP00343CP-N) is available separately.

Product images:


Western blot analysis of SGLT-1 expression in Jurkat cell lysate.