

## Product datasheet for **AP00342PU-N**

### Phospholipase C gamma 1 (PLCG1) Rabbit Polyclonal Antibody

#### Product data:

Product Type:	Primary Antibodies
Applications:	WB
Recommended Dilution:	Western Blot: 0.5-4 µg/ml; Jurkat cell lysate can be used as a positive control.
Reactivity:	Human
Host:	Rabbit
Clonality:	Polyclonal
Immunogen:	Synthetic peptide surrounding amino acid 1252 of human PLCγ2
Specificity:	The antibody recognizes 139 kDa human PLCγ 1&2.
Formulation:	PBS containing 30% glycerol, 0.5% BSA, and 0.01% thimerosal State: Aff - Purified State: Liquid purified Ig
Concentration:	lot specific
Purification:	Protein A affinity purified
Conjugation:	Unconjugated
Storage:	Store the antibody undiluted at -20°C or for long term storage (in aliquots) at -70°C. Avoid repeated freezing and thawing.
Stability:	Shelf life: one year from despatch.
Gene Name:	phospholipase C gamma 1
Database Link:	<a href="#">Entrez Gene 5335 Human P19174</a>
Background:	PLC (Phosphoinositide-specific phospholipase C) plays a significant role in transmembrane signaling. Four members of PLCs have been identified: PLCβ, PLCγ, PLCδ, and PLCε. In response to extracellular stimuli (e.g., hormone, growth factors, neurotransmitters), PLC hydrolyzes phosphatidylinositol 4,5-bisphosphate (PIP2) into two secondary messengers: inositol 1,4,5-trisphosphate (IP3) and diacylglycerol (DAG). PLCγ2 is engaged in antigen-dependent signaling in B-cells and collagen-dependent signaling in platelets.
Synonyms:	PLC-148, PLC-II, PLC-gamma-1, PLC1, PLCG-1, Phospholipase C-gamma-1, Phospholipase C-gamma-2, PLC-gamma-2, PLCgamma2, PLCG-2, PLC-IV



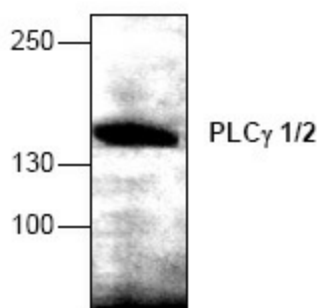
[View online »](#)

**Note:** Blocking peptide (AP00342CP-N) is available separately.

**Protein Families:** Druggable Genome

**Protein Pathways:** Calcium signaling pathway, Epithelial cell signaling in Helicobacter pylori infection, ErbB signaling pathway, Fc epsilon RI signaling pathway, Fc gamma R-mediated phagocytosis, Glioma, Inositol phosphate metabolism, Leukocyte transendothelial migration, Metabolic pathways, Natural killer cell mediated cytotoxicity, Neurotrophin signaling pathway, Non-small cell lung cancer, Pathways in cancer, Phosphatidylinositol signaling system, T cell receptor signaling pathway, VEGF signaling pathway, Vibrio cholerae infection

### Product images:



Western blot analysis of PLC $\gamma$  1&2 expression in Jurkat cell lysate.