

Product datasheet for **AP00310PU-N**

beta Actin (ACTB) (Loading Control) Rabbit Polyclonal Antibody

Product data:

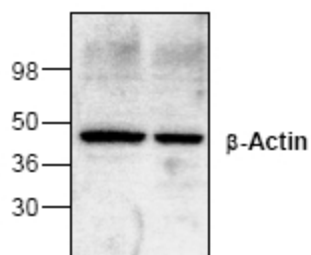
Product Type:	Primary Antibodies
Applications:	WB
Recommended Dilution:	Western Blot: 0.5-2 µg/ml.
Reactivity:	Human, Mouse, Rabbit
Host:	Rabbit
Clonality:	Polyclonal
Immunogen:	Synthetic peptide corresponding to residues around amino acid 10 of Human Actin.
Specificity:	The antibody recognizes 45 kDa beta-Actin.
Formulation:	PBS containing 30% Glycerol State: Purified State: Liquid purified Ig fraction. Stabilizer: 0.5% BSA Preservative: 0.01% Thimerosal
Concentration:	lot specific
Purification:	Protein A Chromatography.
Conjugation:	Unconjugated
Storage:	Upon receipt, store the antibody undiluted (in aliquots) at -20°C or for long term storage (in aliquots) at -70°C. Avoid repeated freezing and thawing.
Stability:	Shelf life: one year from despatch.
Gene Name:	actin, beta
Database Link:	<u>Entrez Gene 60 Human P60709</u>
Background:	Actin is expressed in all eukaryotic cells and is the major component of the cytoskeleton. At least six types of actin are present in mammalian tissues and fall into three classes. Alpha actin expression is limited to various types of muscle and it regulates contractile potentials for the muscle cells, whereas beta and gamma actin, also known as cytoplasmic actin, are predominantly expressed in nonmuscle cells, controlling cell structure and motility.



[View online »](#)

Synonyms: Actin cytoplasmic 1, Beta-Actin

Product images:



Western blot analysis of β -Actin in Jurkat cell lysate (left lane) and mouse intestine tissue lysate (right lane).