

Product datasheet for **AP00193PU-N**

SGK1 (C-term) Rabbit Polyclonal Antibody

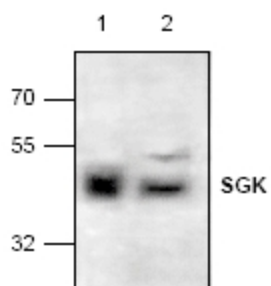
Product data:

Product Type:	Primary Antibodies
Applications:	IP, WB
Recommended Dilution:	Western Blot: 0.5-4 µg/ml. Immunoprecipitation: 10-20 µg/ml.
Reactivity:	Human, Mouse, Rat
Host:	Rabbit
Clonality:	Polyclonal
Immunogen:	Synthetic peptide corresponding to the C-terminus of Human SGK.
Specificity:	The antibody detects 54 kDa SGK
Formulation:	PBS, pH 7.2 containing 30% Glycerol, 0.5% BSA and 0.01% Thimerosal State: Aff - Purified State: Liquid purified Ig fraction.
Concentration:	lot specific
Purification:	Affinity Chromatography.
Conjugation:	Unconjugated
Storage:	Blocking Peptide (AP00345CP-N) is also available separately.
Gene Name:	serum/glucocorticoid regulated kinase 1
Database Link:	Entrez Gene 20393 Mouse Entrez Gene 29517 Rat Entrez Gene 6446 Human O00141
Background:	Serum and glucocorticoid-inducible kinase (SGK) is a serine/threonine kinase that is closely related to Akt. SGK is rapidly induced in response to a variety of stimuli, including serum, hormones, and osmotic shock, etc. SGK has been involved in modulating anti-apoptotic and cell cycle regulation, as well as in activating certain potassium, sodium and chloride channels.
Synonyms:	Serine/threonine-protein kinase Sgk1
Protein Families:	Druggable Genome, Protein Kinase



[View online »](#)

Product images:



Western blot analysis of SGK expression in lysate from Rat kidney (Lane 1) and 3T3 cells (Lane 2).