

Product datasheet for **AP00152PU-N**

bcl 6 (BCL6) Rabbit Polyclonal Antibody

Product data:

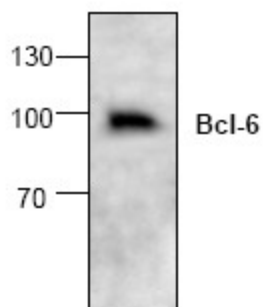
Product Type:	Primary Antibodies
Applications:	IHC, IP, Neutralize, WB
Recommended Dilution:	Western Blot: 0.5-4 µg/ml. Neutralization: 0.5-5 µg/ml. Immunoprecipitation: 10-20 µg/ml. Immunohistochemistry: 20-40 µg/ml.
Reactivity:	Human, Mouse, Rat
Host:	Rabbit
Clonality:	Polyclonal
Immunogen:	Synthetic peptide mapping to amino acid residues near the C-terminus of Human Bcl-6
Specificity:	This antibody detects 80-100 kDa Bcl-6.
Formulation:	PBS, pH 7.2 State: Aff - Purified State: Liquid purified IgG fraction Stabilizer: 30% Glycerol, 0.5% BSA Preservative: 0.01 % Thimerosal
Concentration:	lot specific
Purification:	Affinity Chromatography
Conjugation:	Unconjugated
Storage:	Store (in aliquots) at -20°C to -70°C. Avoid repeated freezing and thawing.
Stability:	Shelf life: one year from despatch.
Gene Name:	B-cell CLL/lymphoma 6
Database Link:	Entrez Gene 604 Human P41182
Background:	Bcl-6 encodes a protein of 706 amino acids with a predicted molecular weight of 79 kDa. The Bcl-6 protein has homology with zinc finger transcription factors. However, little is known about its functions.



[View online »](#)

Synonyms: BCL6, BCL5, BCL-5, LAZ3, LAZ-3, ZBTB27, ZNF51

Product images:



Western blot analysis of Bcl-6 in Jurkat cell lysate using antibody