

Product datasheet for **AP00064PU-N**

Cathepsin B (CTSB) Rabbit Polyclonal Antibody

Product data:

Product Type:	Primary Antibodies
Applications:	FC, IHC, WB
Recommended Dilution:	Western Blot: 0.5-4 µg/ml. Positive Control: Jurkat cell lysate & mouse small intestine tissue lysate. Immunohistochemistry: 1/100. Flow Cytometry: 1/50 (v/v).
Reactivity:	Human, Mouse, Rat
Host:	Rabbit
Clonality:	Polyclonal
Immunogen:	Synthetic peptide surrounding amino acid 322 of Human Cathepsins B
Specificity:	The purified antibody detects both the proform (37-43 kDa) and the mature form (25 kDa) of Cathepsin B. It reacts with Human and Mouse and in a lesser extent with Rat samples.
Formulation:	PBS, pH 7.2 State: Purified State: Liquid purified Ig fraction Stabilizer: 30% Glycerol, 0.5% BSA Preservative: 0.01% Thimerosal
Concentration:	lot specific
Purification:	Affinity Chromatography
Conjugation:	Unconjugated
Storage:	Store undiluted at -20°C or for long term storage (in aliquots) at -20°C to -70°C. Avoid repeated freezing and thawing.
Stability:	Shelf life: one year from despatch.
Gene Name:	cathepsin B
Database Link:	Entrez Gene 1508 Human P07858



[View online »](#)

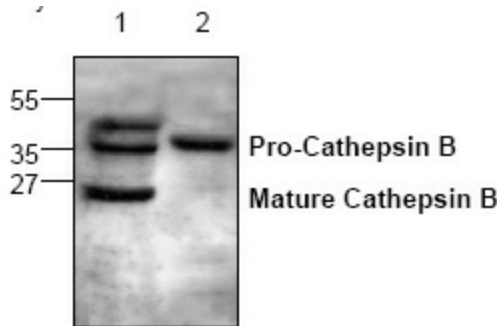
Background:

Cathepsin B is a normal lysosomal cysteine proteinase that is expressed in all cells. It is synthesized as an inactive 43 kDa pro-enzyme which, by removal of a 62 amino acid propeptide, is activated to the single-chain form of 31 kDa or the two-chain form (25 and 5 kDa subunits). Matured cathepsin B is normally localized in the lysosomes where it functions in protein turnover. Cathepsin B is also shown capable of degrading extracellular matrix proteins. Elevated levels of cathepsin B correlate with malignancy suggesting that this enzyme may be a useful prognostic marker for several types of human cancers.

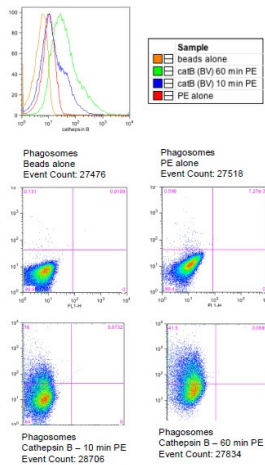
Synonyms:

Cathepsin B1, APP secretase, APPS, CTSB, CPSB

Product images:



Western blot analysis of Cathepsin B with Jurkat cell (Lane 1) and mouse small intestine tissue (Lane 2) lysate.



Flow Cytometry analysis of Cathepsin B levels within phagosomes of macrophages