

Product datasheet for **AP00055PU-N**

Caspase 8 (CASP8) (active) Rabbit Polyclonal Antibody

Product data:

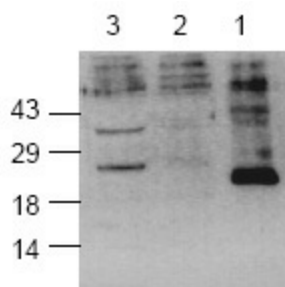
Product Type:	Primary Antibodies
Applications:	IHC, WB
Recommended Dilution:	Western Blot: 0.5-4 µg/ml. Immunohistochemistry: 10-20 mg/ml.
Reactivity:	Human
Host:	Rabbit
Clonality:	Polyclonal
Immunogen:	Synthetic peptide surrounding the cleavage site of human Caspase-8
Specificity:	The affinity purified antibody mainly detects the 26 kDa fully cleaved fragment and the 35-43 kDa intermediate of caspase-8 in apoptotic samples.
Formulation:	PBS, pH 7.2, containing 30% glycerol, 0.5% BSA, 0.01% thimerosal State: Purified State: Liquid purified Ig
Concentration:	lot specific
Purification:	Affinity chromatography
Conjugation:	Unconjugated
Storage:	Store the antibody undiluted at -20°C or for long term storage (in aliquots) at -70°C. Avoid repeated freezing and thawing.
Stability:	Shelf life: one year from despatch.
Gene Name:	caspase 8
Database Link:	Entrez Gene 841 Human Q14790
Background:	Caspase family of cysteine proteases has been shown to play a key role in apoptosis. Caspase-8 is a 55 kDa cytosolic protein that is synthesized as an inactive pro-enzyme. Activation of caspase-8 involves a two-step proteolysis: the cleavage of caspase-8 to generate a 43 and a 12 kDa fragment which is further processed to 10 kDa. The p43 is then cleaved to yield p26 and the release of the active site containing p18.



[View online »](#)

Synonyms: CASP-8, CASP8, MCH5, CAP4

Product images:



Western blot analysis of Caspase-8. Lane 1: Recombinant h-caspase-8; Lane 2: Untreated Jurkat cells; Lane 3: Camptothecin induced cells.