

Product datasheet for **AP00032PU-N**

Cytochrome P450 2E1 (CYP2E1) Rabbit Polyclonal Antibody

Product data:

Product Type:	Primary Antibodies
Applications:	WB
Recommended Dilution:	Western Blot: 0.5-4 µg/ml.
Reactivity:	Canine, Human, Mouse, Rat
Host:	Rabbit
Isotype:	IgG
Clonality:	Polyclonal
Immunogen:	Synthetic peptide surrounding amino acid 405 of Human Cytochrome P450.
Specificity:	The antibody detects ~58kDa cytochrome P450 IIE1.
Formulation:	PBS containing 30% Glycerol, 0.5% BSA and 0.01% Thimerosal as preservative. State: Aff - Purified State: Liquid purified IgG fraction.
Concentration:	lot specific
Purification:	Immunoaffinity Chromatography
Conjugation:	Unconjugated
Storage:	Upon receipt, store (in aliquots) at -20°C to -80°C. Avoid repeated freezing and thawing.
Stability:	Shelf life: one year from despatch.
Gene Name:	cytochrome P450 family 2 subfamily E member 1
Database Link:	Entrez Gene 13106 Mouse Entrez Gene 25086 Rat Entrez Gene 1571 Human P05181
Background:	Cytochrome P450 is mainly found in liver, and can metabolize a wide range of compounds such as organic solvents, acetaminophen, dimethylnitrosoamine and aliphatic alcohol, which have certain toxicological effects in humans. Ethanol-induced cytochrome P450 IIE1 is considered to be one of the major causes of oxidative stress in the liver following ethanol treatment.
Synonyms:	Cytochrome P450 2E1, CYP2E, CYP1IIE1, Cytochrome P450-J

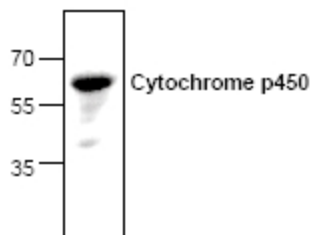


[View online »](#)

Note: Blocking peptide (Cat.#AP00032CP-N) is available separately.

Protein Families: Druggable Genome, P450, Transmembrane

Protein Pathways: Arachidonic acid metabolism, Drug metabolism - cytochrome P450, Linoleic acid metabolism, Metabolic pathways, Metabolism of xenobiotics by cytochrome P450

Product images:

Cytochrome P450 antibody staining of Rat kidney tissue lysate by Western blotting.