

## Product datasheet for **AP00003PU-N**

### Caspase 3 (CASP3) (active) Rabbit Polyclonal Antibody

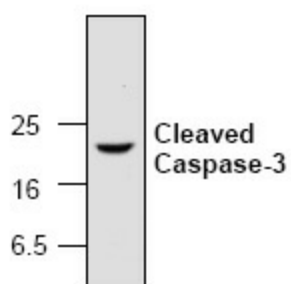
#### Product data:

Product Type:	Primary Antibodies
Applications:	IHC, WB
Recommended Dilution:	<b>Western Blot:</b> 1/50-1/500. <b>Immunohistochemistry on Paraffin Sections:</b> 1/10-1/20.
Reactivity:	Human, Mouse, Rat
Host:	Rabbit
Clonality:	Polyclonal
Immunogen:	Synthetic peptide mapping to the N-terminus adjacent to the cleavage site of Human Caspase-3.
Specificity:	The antibody preferentially recognizes the p17 fragment of the active Caspase-3.
Formulation:	PBS containing 30% Glycerol, 0.5% BSA, and 0.01% Thimerosal State: Purified State: Liquid purified IgG fraction
Concentration:	lot specific
Purification:	Antigen Affinity Chromatography
Conjugation:	Unconjugated
Storage:	Upon receipt, store (in aliquots) at -20°C to -80°C. Avoid repeated freezing and thawing.
Stability:	Shelf life: one year from despatch.
Gene Name:	caspase 3
Database Link:	<a href="#">Entrez Gene 836 Human P42574</a>
Background:	Caspase-3 has been extensively studied and implicated to play an important role in apoptosis. Active caspase-3 proteolytically cleaves and activates other caspases, as well as relevant targets in the cells (e.g., PARP). The affinity purified antibody recognizing the active forms of caspase-3 provides a new tool for identifying apoptotic cell populations in both tissue sections and cultured cells.
Synonyms:	CASP-3, CASP3, CPP32, CPP-32, Yama protein, Apopain, SCA-1, SCA1



[View online »](#)

## Product images:



Western blot analysis of caspase-3 in camptothecin (2 uM) treated Jurkat cells.