

## Product datasheet for **AM60060PU-N**

### **Pcdhga1 (808-931, Cytopl. Dom.) Mouse Monoclonal Antibody [Clone ID: S159-5]**

#### **Product data:**

Product Type:	Primary Antibodies
Clone Name:	S159-5
Applications:	IF, WB
Recommended Dilution:	<b>Western blot:</b> 1/1000, 1 µg/ml was sufficient for detection of PCDHG (pan) in 20 µg of Rat brain lysate by colorimetric immunoblot analysis using HRP conjugated secondary antibody. <b>Immunocytochemistry.</b>
Reactivity:	Mouse, Rat
Host:	Mouse
Isotype:	IgG1
Clonality:	Monoclonal
Immunogen:	Fusion protein corresponding to amino acids 808-931 (C-terminal cytoplasmic constant domain) of mouse Protocadherin-gamma-A1 that is shared by all 22 Gamma-protocadherins (A-subfamily: amino acids ~807-930, B-subfamily: amino acids ~789-912 and C subfamily).
Specificity:	This antibody detects a ~100 kDa protein. Cross-reacts with all Gamma- protocadherin-A, -B and -C proteins.
Formulation:	PBS pH 7.4, 50% Glycerol, 0.09% Sodium Azide State: Purified State: Liquid purified IgG fraction
Concentration:	lot specific
Purification:	Protein G Chromatography
Conjugation:	Unconjugated
Storage:	Upon receipt, store undiluted (in aliquots) at -20°C. Avoid repeated freezing and thawing.
Stability:	Shelf life: One year from despatch.
Gene Name:	protocadherin gamma subfamily A, 1
Database Link:	<a href="#">Entrez Gene 93709 Mouse Q91XZ0</a>



[View online »](#)

**Background:**

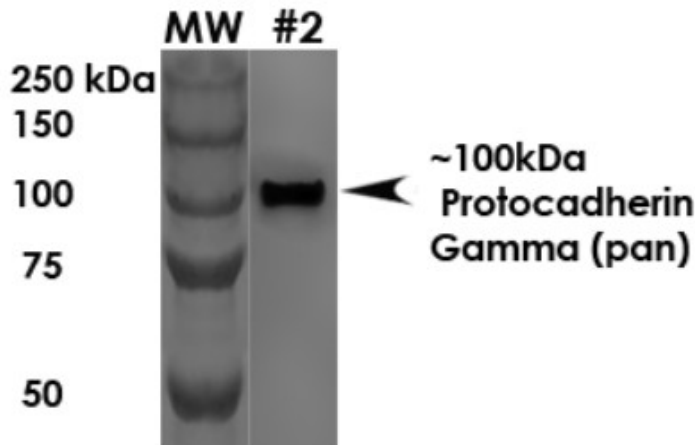
The protocadherin gamma gene cluster is one of three related clusters tandemly linked on chromosome five. These gene clusters have an immunoglobulin-like organization, suggesting that a novel mechanism may be involved in their regulation and expression. The gamma gene cluster includes 22 genes divided into 3 subfamilies. Subfamily A contains 12 genes, subfamily B contains 7 genes and 2 pseudogenes, and the more distantly related subfamily C contains 3 genes.

The tandem array of 22 large, variable region exons are followed by a constant region, containing 3 exons shared by all genes in the cluster. Each variable region exon encodes the extracellular region, which includes 6 cadherin ectodomains and a transmembrane region. The constant region exons encode the common cytoplasmic region. These neural cadherin-like cell adhesion proteins most likely play a critical role in the establishment and function of specific cell-cell connections in the brain. Alternative splicing has been described for the gamma cluster genes.

**Synonyms:**

Protocadherin gamma, PCDH gamma, Gamma protocadherin

**Product images:**



Western blot of rat brain membrane lysates showing the detection of ~100 kDa. Protocadherin Gamma (pan) protein using Anti-Protocadherin Gamma (pan) Antibody [S159-5] (Cat.-No AM60060PU). Lane 1: MW ladder. Lane 2: Anti- Protocadherin Gamma (pan) (1:1000). Load: 10 µg RBM per lane. Block: 5% milk + TBST O/N at 4°C. Primary antibody: Mouse Anti-Protocadherin Gamma (pan) monoclonal antibody [S159-5] (Cat.-No AM60060PU) incubated for 60 min at RT. Secondary antibody: Goat Anti-Mouse HRP antibody at 1:200 for 60min at RT. Development: ECL solution for 6min at RT. Predicted/Observed size: ~ 100 kDa. Other band(s):~None.