

## Product datasheet for **AM60042RP-N**

### **SIGLEC9 Mouse Monoclonal Antibody [Clone ID: K8]**

#### **Product data:**

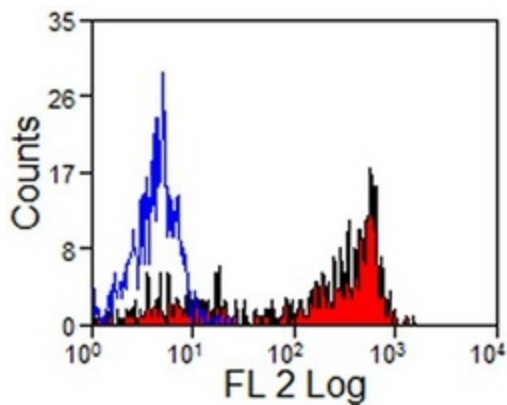
Product Type:	Primary Antibodies
Clone Name:	K8
Applications:	FC
Recommended Dilution:	<b>Flow cytometry:</b> Neat, use 10 $\mu$ l to label 10e6 cells in 100 $\mu$ l.
Reactivity:	Human
Host:	Mouse
Isotype:	IgG1
Clonality:	Monoclonal
Immunogen:	Recombinant SIGLEC9, fused to the Fc region of human IgG
Specificity:	This antibody clone K8 recognizes human SIGLEC9.
Formulation:	PBS containing 0.09% Sodium azide, 1% BSA and 5% Sucrose Label: PE State: Purified State: Lyophilized purified IgG Label: R. Phycoerythrin
Reconstitution Method:	Restore with 1.0 ml distilled water.
Purification:	Affinity chromatography on Protein G
Conjugation:	PE
Storage:	Prior to and following reconstitution store the antibody at 2-8°C. <b>DO NOT FREEZE!</b> This product is photosensitive and should be protected from light.
Stability:	Shelf life: one year from despatch.
Gene Name:	sialic acid binding Ig like lectin 9
Database Link:	<a href="#">Entrez Gene 27180 Human Q9Y336</a>
Background:	Human Siglec-9 is broadly expressed in a range of human tissues with high expression on monocytes and low-level expression on neutrophils and subpopulations of NK, B, and T cells.



[View online »](#)

Synonyms: SIGLEC-9, CDw329, FOAP-9, OBBP-like

**Product images:**



Human peripheral blood monocytes stained with mouse anti human CD329 / SIGLEC9 antibody clone K8 Cat.-No. AM60042RP-N