

## Product datasheet for **AM60042PU-S**

### SIGLEC9 Mouse Monoclonal Antibody [Clone ID: K8]

#### Product data:

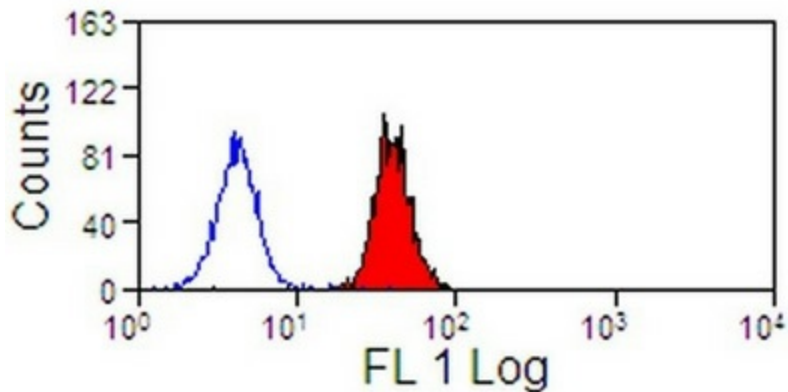
Product Type:	Primary Antibodies
Clone Name:	K8
Applications:	ELISA, FC, IF, IP, WB
Recommended Dilution:	<b>Flow cytometry:</b> 1/25-1/200, use 10µl of this working dilution to label 10e6 cells in 100µl. <b>Immunofluorescence.</b> <b>Immunoprecipitation.</b> <b>Western blot.</b> <b>Indirect ELISA.</b>
Reactivity:	Human
Host:	Mouse
Isotype:	IgG1
Clonality:	Monoclonal
Immunogen:	Recombinant SIGLEC9, fused to the Fc region of human IgG
Specificity:	This antibody clone K8 recognizes human SIGLEC9.
Formulation:	PBS containing 0.09% Sodium azide State: Purified State: Liquid purified IgG
Concentration:	lot specific
Purification:	Affinity chromatography on Protein G
Conjugation:	Unconjugated
Storage:	Store undiluted at 2-8°C for one month or (in aliquots) at -20°C for longer. Avoid repeated freezing and thawing.
Stability:	Shelf life: one year from despatch.
Gene Name:	sialic acid binding Ig like lectin 9
Database Link:	<a href="#">Entrez Gene 27180 Human Q9Y336</a>
Background:	Human Siglec-9 is broadly expressed in a range of human tissues with high expression on monocytes and low-level expression on neutrophils and subpopulations of NK, B, and T cells.



[View online »](#)

Synonyms: SIGLEC-9, CDw329, FOAP-9, OBBP-like

### Product images:



Human peripheral blood monocytes stained with mouse anti human CD329 / SIGLEC9 clone K8., followed by secondary FITC-conjugated anti mouse antibody.