

## Product datasheet for **AM60018RP-N**

### Clec1b Rat Monoclonal Antibody [Clone ID: 17D9]

#### Product data:

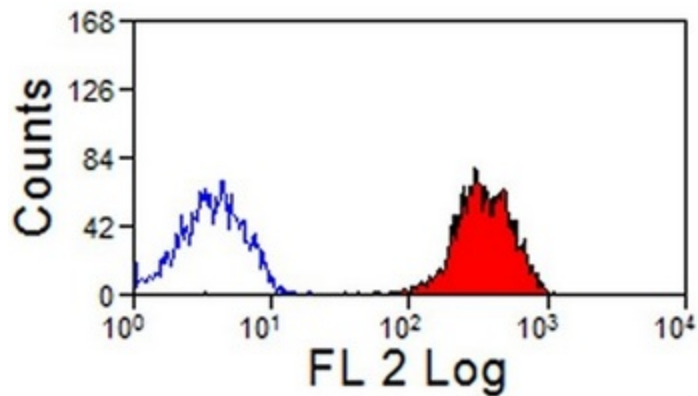
Product Type:	Primary Antibodies
Clone Name:	17D9
Applications:	FC, WB
Recommended Dilution:	<b>Flow cytometry:</b> Neat, use 10µl to label 10e6 cells in 100µl.
Reactivity:	Mouse
Host:	Rat
Isotype:	IgG2b
Clonality:	Monoclonal
Immunogen:	RBL-2H3 cells stably expressing HA-tagged mouse CLEC1B.
Specificity:	This antibody (clone 17D9) recognizes mouse CLEC1B.
Formulation:	PBS containing 0.09% Sodium azide, 1% BSA and 5% Sucrose Label: PE State: Purified State: Lyophilised purified IgG Label: R. Phycoerythrin
Reconstitution Method:	Restore with 1 ml distilled water.
Purification:	Affinity chromatography on Protein G
Conjugation:	PE
Storage:	Prior to and following reconstitution store the antibody at 2-8°C. <b>DO NOT FREEZE!</b> This product is photosensitive and should be protected from light.
Stability:	Shelf life: one year from despatch.
Gene Name:	C-type lectin domain family 1, member b
Database Link:	<a href="#">Entrez Gene 56760 Mouse Q9JL99</a>
Background:	CLEC1B, C-type lectin domain family 1 member B, is also known as CLEC2. CLEC1B acts as a receptor for rhodocytin, a platelet-aggregating protein found in snake venom. CLEC2 expression is not restricted to platelets and also acts as an activation receptor on neutrophils.



[View online »](#)

Synonyms: CLEC2, CLEC-2

**Product images:**



Mouse peripheral blood platelets stained with rat anti mouse CLEC1B antibody Cat.- No. AM60018RP-N.