

Product datasheet for **AM60018FC-N**

Clec1b Rat Monoclonal Antibody [Clone ID: 17D9]

Product data:

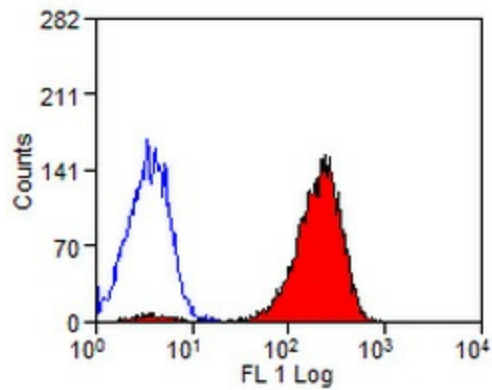
| | |
|-----------------------|--|
| Product Type: | Primary Antibodies |
| Clone Name: | 17D9 |
| Applications: | FC |
| Recommended Dilution: | Flow cytometry: Neat-1/10, use 10µl of this suggested dilution to label 10e6 cells in 100µl. |
| Reactivity: | Mouse |
| Host: | Rat |
| Isotype: | IgG2b |
| Clonality: | Monoclonal |
| Immunogen: | RBL-2H3 cells stably expressing HA-tagged mouse CLEC1B. |
| Specificity: | This antibody (clone 17D9) recognizes mouse CLEC1B. |
| Formulation: | PBS containing 0.09% Sodium azide and 1% BSA Label: FITC State: Purified State: Liquid purified IgG Label: Fluorescein Isothiocyanate Isomer 1 |
| Concentration: | lot specific |
| Purification: | Affinity chromatography on Protein G |
| Conjugation: | FITC |
| Storage: | Store undiluted at 2-8°C for one month or (in aliquots) at -20°C for longer. This product is photosensitive and should be protected from light. Avoid repeated freezing and thawing. |
| Stability: | Shelf life: one year from despatch. |
| Gene Name: | C-type lectin domain family 1, member b |
| Database Link: | Entrez Gene 56760 Mouse Q9JL99 |
| Background: | CLEC1B, C-type lectin domain family 1 member B, is also known as CLEC2. CLEC1B acts as a receptor for rhodocytin, a platelet-aggregating protein found in snake venom. CLEC2 expression is not restricted to platelets and also acts as an activation receptor on neutrophils. |



[View online »](#)

Synonyms: CLEC2, CLEC-2

Product images:



Mouse peripheral blood platelets stained with rat anti mouse CLEC1B antibody.