

Product datasheet for **AM50638PU-N**

HINT2 Mouse Monoclonal Antibody [Clone ID: AT5B10]

Product data:

| | |
|------------------------------|--|
| Product Type: | Primary Antibodies |
| Clone Name: | AT5B10 |
| Applications: | ELISA, FC, WB |
| Recommended Dilution: | The antibody has been tested by ELISA, Western blot analysis and Flow cytometry to assure specificity and reactivity. Since application varies, however, each investigation should be titrated by the reagent to obtain optimal results. |
| Reactivity: | Human |
| Host: | Mouse |
| Isotype: | IgG1 |
| Clonality: | Monoclonal |
| Immunogen: | Recombinant human HINT2 (18-163aa) purified from E. coli. |
| Formulation: | Liquid. In Phosphate-Buffered Saline (pH 7.4) with 0.02% Sodium Azide, 10% Glycerol. State: Purified State: Liquid purified Ig fraction |
| Concentration: | lot specific |
| Purification: | Protein-A affinity chromatography |
| Conjugation: | Unconjugated |
| Storage: | Store undiluted at 2-8°C for one month or (in aliquots) at -20°C for longer. Avoid repeated freezing and thawing. |
| Stability: | Shelf life: one year from despatch. |
| Gene Name: | histidine triad nucleotide binding protein 2 |
| Database Link: | Entrez Gene 84681 Human Q9BX68 |



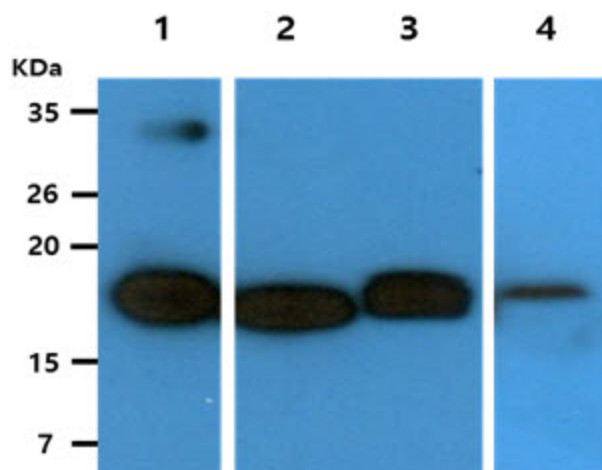
[View online »](#)

Background:

Histidine triad nucleotide binding protein 2 (HINT2) is a mitochondrial protein. This protein is an AMP-lysine hydrolase and phosphoamidase and may contribute to tumor suppression. This protein is a member of the HIT superfamily and Hint subfamily, which are characterized as nucleotide hydrolases and transferases that act on the alpha-phosphate of ribonucleotides. HINT2 regulates steroidogenesis through calcium-dependent and calcium-independent signaling pathways that may serve to maintain a favorable mitochondrial potential. Its role in calcium homeostasis may also contribute to its proapoptotic function in hepatocytes and other non-steroidogenic cells, though the exact mechanism remains unclear.

Synonyms:

HINT-2, HINT-3, HIT-17kDa, PKCI-1-related HIT protein

Product images:

The recombinant human HINT2 (50ng) and Cell lysates (40ug) were resolved by SDS-PAGE, transferred to PVDF membrane and probed with anti-human HINT2 antibody (1:1000). Proteins were visualized using a goat anti-mouse secondary antibody conjugated to HRP and an ECL detection system. Lane 1. : HINT2 Recombinant protein Lane 2. : HepG2 cell lysate Lane 3. : U87MG cell lysate Lane 4. : Mouse brain lysate