

## Product datasheet for **AM50637PU-S**

### Alpha-actinin-1 / ACTN1 Mouse Monoclonal Antibody [Clone ID: AT1D10]

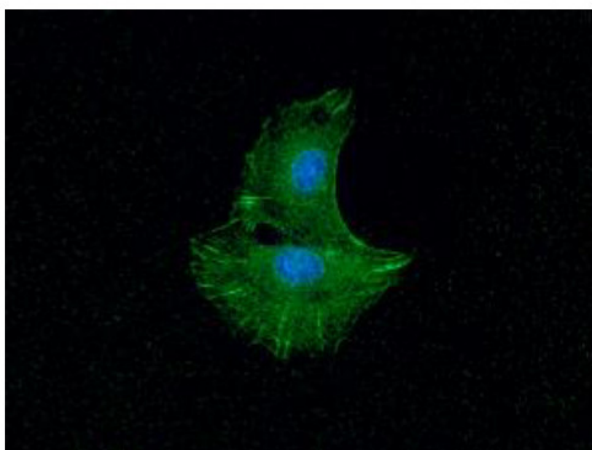
#### Product data:

|                       |  |
|-----------------------|--|
| Product Type:         | Primary Antibodies   |
| Clone Name:           | AT1D10   |
| Applications:         | ELISA, FC, IF, WB  |
| Recommended Dilution: | <b>ELISA.</b><br><b>Western blot.</b><br><b>Flow cytometry.</b><br><b>Immunofluorescence.</b>  |
| Reactivity:           | Human  |
| Host:                 | Mouse  |
| Isotype:              | IgG2a  |
| Clonality:            | Monoclonal   |
| Immunogen:            | Recombinant human ACTN1 (1-249aa) purified from E. coli.   |
| Formulation:          | Phosphate-Buffered Saline (pH 7.4) with 0.02% Sodium Azide, 10% Glycerol.<br>State: Purified<br>State: Liquid purified Ig fraction   |
| Concentration:        | lot specific   |
| Purification:         | Protein-A affinity chromatography  |
| Conjugation:          | Unconjugated   |
| Storage:              | Store undiluted at 2-8°C for one month or (in aliquots) at -20°C for longer.<br>Avoid repeated freezing and thawing.   |
| Stability:            | Shelf life: one year from despatch.  |
| Gene Name:            | actinin alpha 1  |
| Database Link:        | <a href="#">Entrez Gene 87 Human P12814</a>  |
| Background:           | ACTN1 also known as Actinin, alpha 1. ACTN1 functions as an actin-binding-protein. ACTN1 determines the motility of keratinocytes by regulating the organization of the actin cytoskeleton, focal adhesion, and hemidesmosome proteins complexes, thereby modulating cell speed, lamellipodial dynamics, and directed migration. |

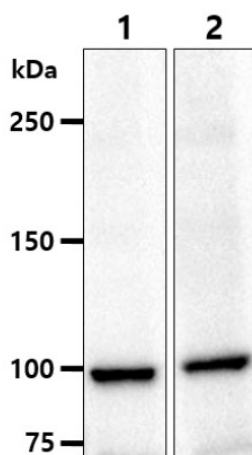


[View online »](#)

|                          |   |
|--------------------------|---|
| <b>Synonyms:</b>         | Alpha actinin cytoskeletal isoform, Non-muscle alpha-actinin 1  |
| <b>Protein Families:</b> | Druggable Genome, ES Cell Differentiation/IPS   |
| <b>Protein Pathways:</b> | Adherens junction, Arrhythmogenic right ventricular cardiomyopathy (ARVC), Focal adhesion, Leukocyte transendothelial migration, Regulation of actin cytoskeleton, Systemic lupus erythematosus, Tight junction |

**Product images:**

**Immunofluorescence:** ICC/IF analysis of ACTN1 in Balb-3T3 cells. The cell was stained with AM50637PU (1:100). The secondary antibody (green) was used Alexa Fluor 488. DAPI was stained the cell nucleus (blue).



**Western Blot Analysis:** The cell lysates (40ug) were resolved by SDS-PAGE, transferred to PVDF membrane and probed with anti-human ACTN1 antibody (1:1000). Proteins were visualized using a goat anti-mouse secondary antibody conjugated to HRP and an ECL detection system. Lane 1. : PC-3 cell lysate Lane 2. : A549 cell lysate